



STAEDTLER®

Head of ideas.



FIMO®

M

A

D

E

b

y

Y

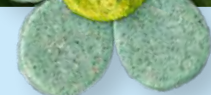
O

U



CREATIVE IDEAS

Catalogue Modelling





FIMO®

M A D E b y
Y O U ♥



CONTENTS

FIMO® MADE BY YOU ♥

| | |
|--------------------|-------|
| FIMO MADE BY YOU ♥ | 09 |
| POS | 10–12 |

FIMO® kids

| | | |
|------------|---|-------|
| FIMO® kids | Tutorial „Funny Beetles“ | 15 |
| | Individual colours, display, colour packs | 16–18 |
| | form&play | 19–23 |

FIMO® soft / FIMO® effect / FIMO® liquid

| | | |
|--------------|---|-------|
| FIMO® soft | Tutorial “Upcycling DIY plant pot” | 26 |
| | Individual colours | 27 |
| | Trend colours, display | 28 |
| | Tutorial „Shell earrings in trend colours“ | 29 |
| | Large block, display, colour packs, basic sets | 30–33 |
| FIMO® effect | Individual colours, displays, colour packs | 35–38 |
| | Tutorial „Loop earrings in FIMO effect botanical“ | |
| | HOW-TO-CREATE Sets, Jewellery sets | 39–42 |
| | Tutorial „Flower earrings in FIMO effect botanical“ | 43 |
| FIMO® liquid | Oven-hardening liquid gel, Display, mix quick | 44–45 |
| FIMO® | Bead roller, bead piercing needles | 46 |
| | Creative accessories | 47–49 |
| | Leaf metal, varnishes | 50–51 |

FIMO® professional

| | | |
|--------------------|--|-------|
| FIMO® professional | Individual colours, large block, display, colour packs | 54–57 |
|--------------------|--|-------|

FIMO® air

| | | |
|--------------------------|---------------------|----|
| FIMO® air | POS material | 62 |
| | Tutorial „DIY bowl“ | 64 |
| | Individual colours | 66 |
| FIMO® air light | Individual colours | 67 |
| FIMO® air wood-effect | Individual colours | 68 |
| FIMO® air granite-effect | Individual colours | 69 |
| FIMO® air | Sets | 70 |

Noris® junior Modelling dough + Noris® jumbo Plasticine clay

| | |
|----------------------|-------|
| FIMO® colour display | 73–74 |
|----------------------|-------|

| | |
|------------------|-------|
| FIMO® Brand Shop | 75–80 |
|------------------|-------|

With **FIMO® kids** (p. 15 ff.) easy modelling is guaranteed! It is **particularly smooth, easy to shape** and available in a wide variety of bright colours. This modelling clay lets the young artists run free with their imagination and create their own toys.



With **FIMO® soft** (p. 27 ff.) you can turn your ideas into reality. The modelling clay is ready to use and easy to blend – **ideal for beginners and hobby artists**. Easily workable, it has **30 brilliant colours** for you to work with!

FIMO® effect (p. 35 ff.) gives your artwork that certain something: your creation will **shine, shimmer and sparkle**. Available in a **variety of different shades and effects** like nightglow or glitter, this opens up a whole world of stunning options.



FIMO® liquid (p. 44 ff.) is an oven-hardening gel, suitable for **beginners as well as for more advanced users**. It has a thick and fluid consistency. After hardening, it is extremely flexible. FIMO liquid comes with a practical dosage tip for **pinpoint application and clean handling**. It is compatible with FIMO soft, FIMO effect and FIMO professional.



FIMO® professional (p. 54 ff.) is the clay for meeting the highest requirements of professionals, artists and advanced clay users. Its firm consistency allows detailed working and guarantees very high dimensional stability. FIMO professional is compatible with FIMO soft and FIMO effect. With 28 brilliant colours, including 5 True Colours made with the purest pigments and our precision mixing system, you can create accurate and vibrant colour blends.

FIMO® air (p. 62 ff.) is particularly easy to work with because it is not fired in an oven – **it air dries**. Even after that, you can continue to process your creation by **sanding, drilling, filing, painting or polishing** it.



FIMO® tools (p. 47 ff.) help you take your creations to the next level: with these you can easily embellish your artworks, create **unique details** as well as original **patterns and designs**. We offer you modelling tools and acrylic rollers, moulds and varnishes as well as a large selection of decorative items.

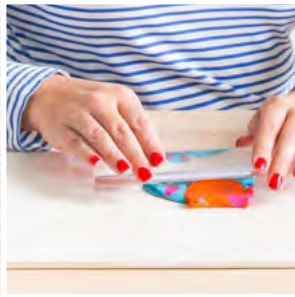
Tips & Tricks

for working with FIMO®
(oven-hardening)

Scan and discover



www.staedtler.com/fimo-tutorial



The right working surface

You can use a range of working surfaces for FIMO: **tiles**, **glass sheets** or **backing paper**. These surfaces ensure that no unwanted patterns are created on the FIMO as you work. They are also particularly easy to remove the modelling clay from.

Keeping hands and work surfaces clean

It is best to clean your hands and work surfaces with a **damp cloth**. This is gentle on the skin (particularly if you have been doing a lot of work with FIMO) and removes dust and dirt, to prevent them from being transferred to the modelling clay.



The best way to store FIMO®

If you have FIMO left over after crafting, it can be stored and **reused**. Oven-hardening FIMO must be stored in a **dust free** but **not airtight** environment. Storage should also protect against heat and sun. We recommend you store FIMO in a **cool, dry place** in **aluminum foil** or **plastic bags**, avoiding contact with polystyrene, PVC or styrofoam.



Creating accents with structured surfaces

Using **texture sheets** or **simple everyday objects** like a sponge, a lace doily or a leaf, great patterns can be created onto the modelled sheet. Just lay it on, press gently and carefully pull it off.

Marbling

By **twisting and kneading** different colours together, great marble effects can be created. The classic modern trend can be applied to FIMO models easily and create a very special look.



Mix colours

By **mixing FIMO colours together**, new and individual colours can be created. The FIMO blocks are divided into 8 portions, which makes the mixing of individual colours very easy.

Colour gradients

Colour gradients can also be made very easily by using different coloured FIMO clays. This effect gives the creations **depth and a special look**. Whether striking or subtle – the gradients can be designed individually.



Embellishing

With leaf metal, gloss or matt varnishes (p. 54 ff.) you can easily achieve stunning effects. After hardening your creation in the oven simply apply some size for leaf metal with a brush and carefully press the leaf metal onto the FIMO. Afterwards seal it with gloss varnish. Using **light and gloss effects** to create **shimmering accents** makes your FIMO creation an eye-catcher.

Find even more tips
under www.fimo.com



MADE BY YOU ♥

Young. Fresh. Bursting with colours.

Spark your customer's creativity with our FIMO MADE BY YOU ♥ sets and tutorials.

Easy to follow and for everybody to recreate: from stunning home deco to eye-catching jewellery and beautiful seasonal projects.

On request we offer video tutorials, images and texts on creative FIMO projects:



Video
tutorial

+



Images of the
individual steps

+



Written instruction
in German & English

Get more inspiration on our website www.fimo.com or check out our social media channels and dive into a world full of creativity!



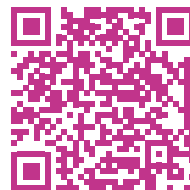
@fimostaedtler



#myFIMO



@STAEDTLER



www.fimo.com





POS ADVERTISING MATERIAL Inspiration for your business

Upgrade your POS with the FIMO MADE BY YOU ♥ lookbooks, including trendy DIY tutorials as well as an overview of the FIMO product range.

Get some inspiration: Check out our brochure with tips and tutorials about FIMO soft & FIMO effect



FIMO brochure soft and effect
14,8 x 21 cm, 24 pages
language: english
art. no. 0V080Q6000

The FIMO professional flyer with colour overview and QR code for our colour mixing system!



FIMO professional flyer
14,8 x 21 cm, 4 pages
language: english
art. no. 0V082F6000



FIMOair lookbook
14,8 x 21 cm, 16 pages
language: english
art. no. 0V081L6000

Check out our brochure with tips and tutorials about FIMOair

Or display the FIMO MADE BY YOU ♥ tear-off pads, containing one tutorial on each side as well as a euro hole for attaching to a hook at the shelf.

A pop of colour:
MADE BY YOU ♥
tutorials to-go!



art. no. 0G080R0
FIMO soft trend colours earrings and keychains with flowerprint



art. no. 0V082C0
FIMO effect metallic mica-shift technique



art. no. 0V082C0
FIMOair granite-effect flower pots and FIMOair wood-effect home deco

back



front

front

art. no. 0G080L0
FIMO soft kawaii necklace and monstera coaster



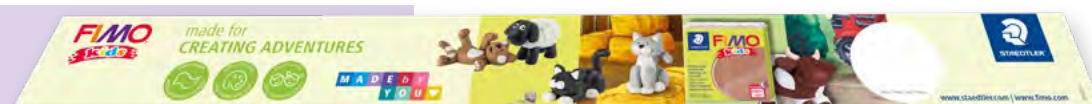
art. no. 0V082B0
FIMO effect galaxy keychains and glitter earrings



art. no. 0V081M0
FIMOair bowls and FIMOair light wind chime



art. no. 0D082P0
FIMO wobbler set



art. no. 0D082V0
FIMO shelf covers





Made for little big talents!

>> Funny Beetles <<



For big and small: With the Funny Beetles anyone can shape their very own lucky charm! By counting the dots on the back, you can easily tell which species the bug belongs to. The most common one is the 7-dotted ladybug. How many dots does your ladybug have?

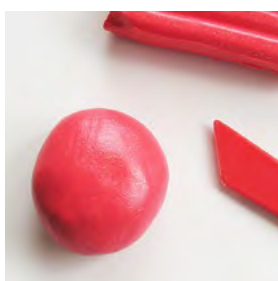
Find the full tutorial here:



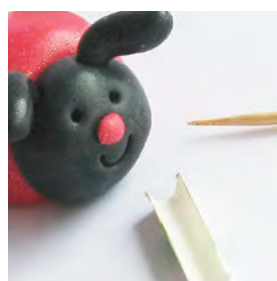
www.fimo.com



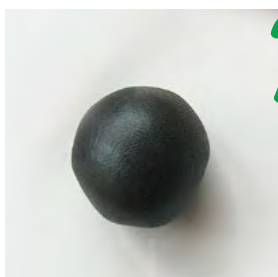
@fimostaedtler



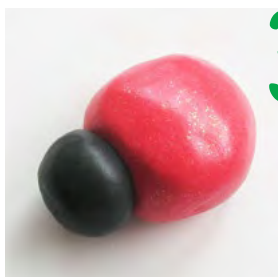
1. Cut off 4 portions from a block of FIMO kids „glitter red“ clay. Roll it into a ball for the body.



5. Shape a small nose and press it onto the head. Use a cocktail stick to make holes for eyes. Use a piece of drinking straw cut in half to make a mouth.



2. Shape 1½ portions of Black into a ball for the head.

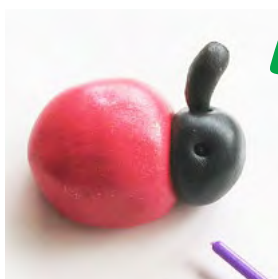


3. Press the head onto the body, keeping both pieces rounded and even.



6. Roll tiny pieces of FIMO into balls for the spots. Flatten them slightly then press onto the body. Make 9 (or 7) spots.

Bake FIMO in a pre-heated oven at 110 °C for 30 minutes. Cool before handling.



4. Divide a ¼ portion into 2 pieces then shape into 2 cm antennae. Make 2 holes in the head with the end of a small brush. Press the antennae into the holes.



MATERIALS

- 1 block FIMO kids „glitter red“ 8030-212
- 1 block FIMO kids „black“ 8030-9
- A tile, modelling tools, cocktailstick, small paintbrush, wet wipes, ruler, scissors, straw

level



easy

crafting time



ca. 30 min

110 °C



30 min

FIMO® KIDS – MODELLING AND PLAYTIME FUN



FIMO® kids

STANDARD BLOCK 8030-..

42 g, 55 x 55 x 10 mm,
segmented into 8 portions,
min. order quantity: 8



Product information

- Oven-hardening modelling clay
- Designed specifically for children
- CE-conform
- Particularly soft shaping and hardening
- 24 vibrant colours
- Practical division into 8 portions for easy blending

- Easy to open
- Modelling fosters creativity, imagination and spatial perception and trains and develops fine motor skills

Colour display:

- Comprising 6 feed trays
- Showcase for presenting finished sample "Rocket"
- Intelligent, modular snap-in design
- 24 FIMO kids colours
- 384 blocks à 42 g
- Display inlay
- 1 colour label





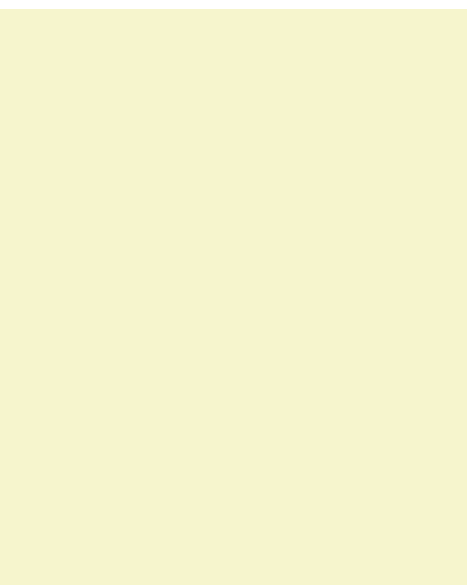
FIMO® kids

COLOUR DISPLAY 8030 VS

Content: 384 blocks à 42 g,
24 colours, dimensions (with topper):
approx. w 445 x d 400 x h 480 mm,
min. order quantity: 1



Customise me!
Find out more about our
customisable FIMO
displays from p. 75!





FIMO® kids

COLOUR PACK 'BASIC' 8032 01

Content: 6 blocks à 42 g, (white, yellow, red, blue, green, black),
instruction,
min. order quantity: 1



FIMO® kids

FIMO® soft | effect



FIMO® kids

COLOUR PACK 'FANCY' 8032 02

Content: 6 blocks à 42 g, (rosa, pink, violet, turquoise, glitter white, glitter gold),
instruction,
min. order quantity: 1



FIMO® professional

FIMO® air



Noris® Modelling dough & Modelling clay

FORM&PLAY

Sets with decorative playing surfaces, 4 blocks à 42 g each, modelling stick, step-by-step instructions, funny stickers and gripping cut out templates.



1. Knead



2. Harden



3. Play



Create your own toys!

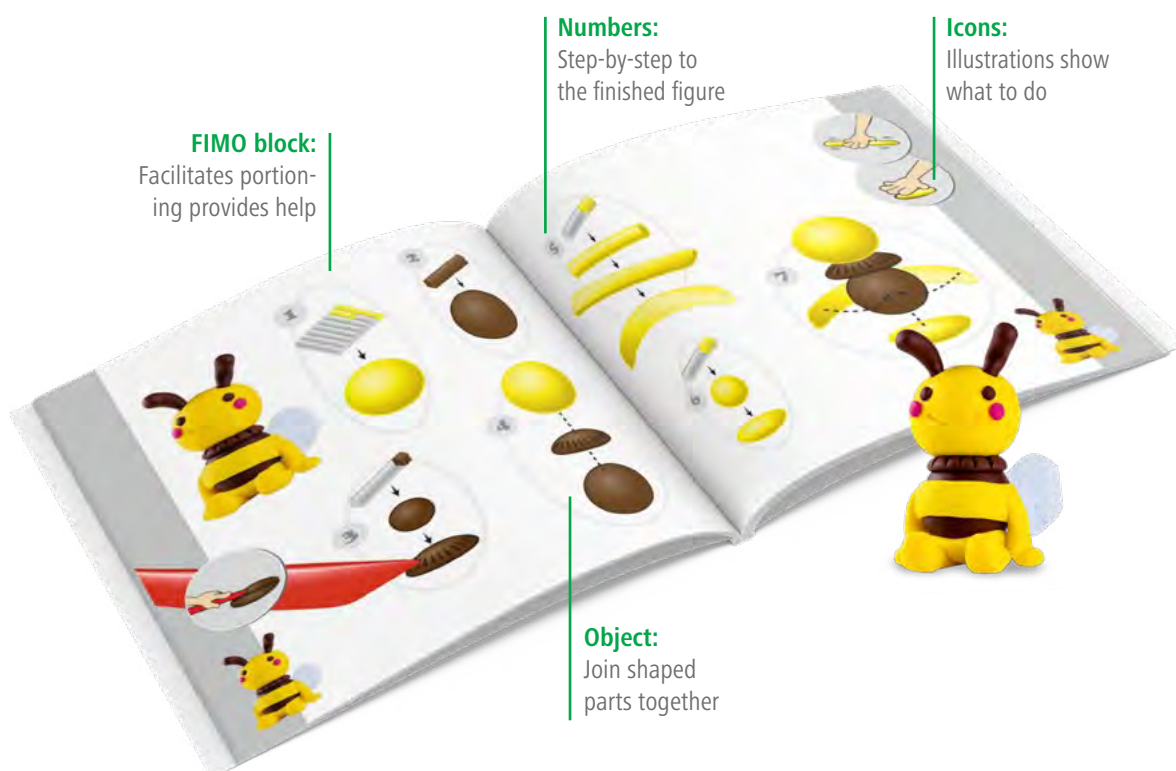
Product information

- Form&play – combination of modelling and playing
- Knead, harden, play
- Especially soft modelling clay
- Exciting projects with detailed step-by-step instructions
- Decorative playing surface, funny stickers and gripping cut out templates increase the playing value of the set
- Attractive, child-friendly instructions to keep and collect
- Fosters: fine motor skills, creativity, imagination and role playing
- Packaging: reclosable box
- Packaging: suitable for hanging or standing presentation



THIS IS HOW THE INSTRUCTIONS WORK:

Every instruction is set up equally.



FIMO block:
Facilitates portioning provides help

Numbers:
Step-by-step to the finished figure

Icons:
Illustrations show what to do

Object:
Join shaped parts together



FIMO® kids

SET 'FARM'

8034 01 LZ

Content: 4 blocks à 42 g (white, pale pink, brown, black),
modelling stick, step-by-step instructions, cut out templates /
playing surface, sticker, instruction,
min. order quantity: 1



FIMO® kids

SET 'PETS'

8034 02 LZ

Content: 4 blocks à 42 g (white, orange, brown, black),
modelling stick, step-by-step instructions, cut out templates /
playing surface, sticker, instruction,
min. order quantity: 1



FIMO® kids

SET 'DINO'

8034 07 LZ

Content: 4 blocks à 42 g (red, light brown, brown, green),
modelling stick, step-by-step instructions, cut out templates /
playing surface, sticker, instruction,
min. order quantity: 1



FIMO® kids

SET 'PONY'

8034 08 LZ

Content: 4 blocks à 42 g (white, brown, glitter gold, black),
modelling stick, step-by-step instructions, cut out templates /
playing surface, sticker, instruction,
min. order quantity: 1





FIMO® kids

SET 'BUTTERFLY' 8034 10 LY

Content: 4 blocks à 42 g (yellow, rosa, turquoise, glitter white), modelling stick, step-by-step instructions, cut out templates / playing surface, sticker, instruction, min. order quantity: 1



FIMO® kids

SET 'MERMAID' 8034 12 LZ

Content: 4 blocks à 42 g (turquoise, pale pink, glitter silver, glitter pink), modelling stick, step-by-step instructions, cut out templates / playing surface, sticker, instruction, min. order quantity: 1



FIMO® kids

SET 'OCEANLIFE' 8034 14 LZ

Content: 4 blocks à 42 g (yellow, red, turquoise, glitter silver), modelling stick, step-by-step instructions, cut out templates / playing surface, sticker, instruction, min. order quantity: 1



FIMO® kids

SET 'CAT' 8034 16 LZ

Content: 4 blocks à 42 g (white, light brown, light grey, black), modelling stick, step-by-step instructions, cut out templates / playing surface, sticker, instruction. min. order quantity: 1





FIMO® kids

SET 'UNICORN' 8034 19 LZ

Content: 4 blocks à 42 g (pearl yellow, light pink, glitter pink, glitter blue), modelling stick, step-by-step instructions, cut out templates / playing surface, sticker, instruction, min. order quantity: 1



FIMO® kids

SET 'HAPPY BEES' 8034 27 LZ

Content: 4 blocks à 42 g (yellow, pink, light green, brown), modelling stick, step-by-step instructions, cut out templates / playing surface, sticker, instruction, min. order quantity: 1



FIMO® kids

SET 'DREAM PETS' 8034 28 LZ

Content: 4 blocks à 42 g (white, rosa, glitter gold, black), modelling stick, step-by-step instructions, cut out templates / playing surface, sticker, instruction, min. order quantity: 1

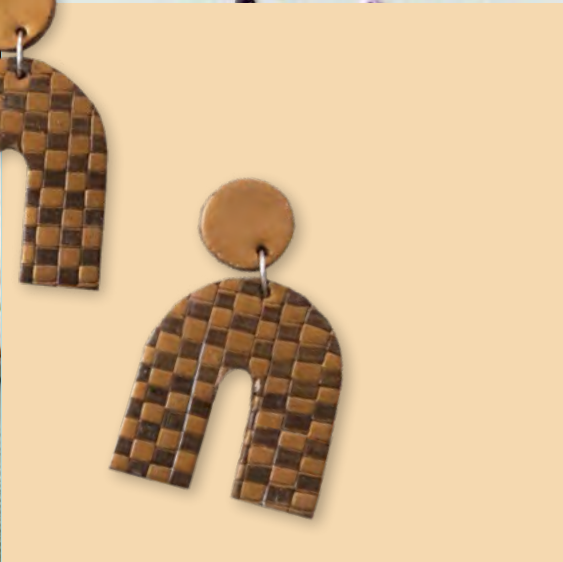


FIMO® kids

SET 'POLICE RACE' 8034 29 LZ

Content: 4 blocks à 42 g (glitter silver, glitter blue, red, black), modelling stick, step-by-step instructions, cut out templates / playing surface, sticker, instruction, min. order quantity: 1

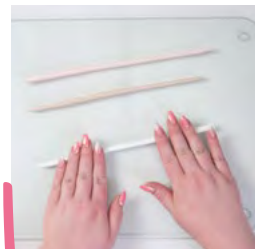






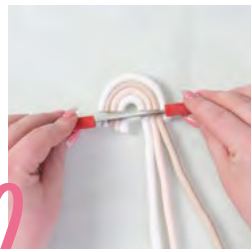
Made for creative bloomers!

>>Upcycling DIY flower pot<<



1.

Roll half a block each of FIMO soft in "white", "pale pink" and "sahara" into long cords (approx. 30 cm long).



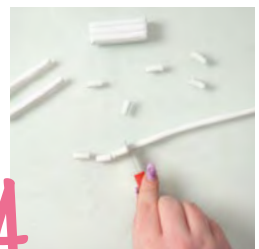
2.

Make your rainbow by shaping the white FIMO cord into a "U". Position the FIMO soft "sahara" cord underneath it, followed by the cord in "flesh light" and "white". Cut off the surplus ends at the bottom edges of the rainbow using the blade.



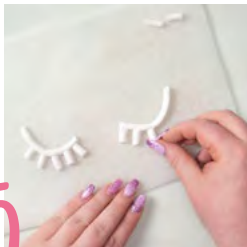
3.

Create several rainbows like this and place them directly on the terracotta pot. It also looks pretty if you add little dots of FIMO in between.



4.

Roll some FIMO soft "white" into a long cord. Cut off two pieces and form them each into a shallow "U" shape.



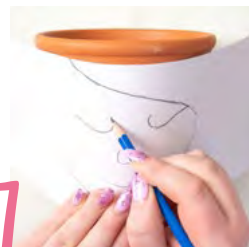
5.

Now add several smaller pieces of the FIMO cord and press down.



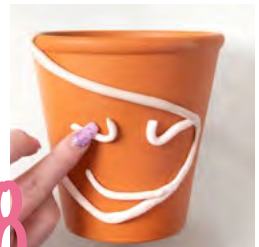
6.

Roll some FIMO soft "sahara" into a long cord. Print out the template and shade over the reverse side of the paper with a soft pencil.



7.

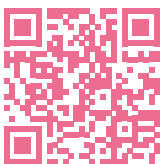
Now go over the lines with an HB pencil to transfer the design to your flower pot.



8.

Position the FIMO cords on the lines you have traced and press down. Now harden all your terracotta pots with FIMO decorations for 30 minutes in a preheated oven at 110 °C / 230 °F on upper and lower heat.

Tip: If the FIMO won't stick to the terracotta pot after hardening, simply attach your design using superglue.



[www.staedtler.com/
diy-flower-pot](http://www.staedtler.com/diy-flower-pot)

MATERIALS

- 1 block FIMO soft "white" 8020-0
- 1 block FIMO soft "pale pink" 8020-43
- 1 block FIMO soft "sahara" 8020-70
- FIMO blade set 8700 04
- Plant pot
- Super glue

level crafting time 110 °C



easy



ca. 30 min



30 min

Find the full tutorial here:



www.fimo.com



@fimostaedtler



– FUN FOR CREATIVE USERS



FIMO® soft

STANDARD BLOCK 8020-..

57 g, 55 x 55 x 15 mm,
segmented into 8 portions,
30 vibrant colours,
min. order quantity: 6



Product information

- Oven-hardening modelling clay
- Perfect for beginners and hobby artists
- Soft and smooth
- 30 vibrant colours
- Practical division into 8 portions for easy blending
- Compatible with FIMO effect and FIMO professional
- Easy to open

- Infinitely versatile: for jewellery, accessories and home deco items
- Extensive range of blocks, sets and accessories

Colour display:

- Comprising 6 feed trays
- Showcase for presenting finished sample "Monstera leaf"

- Intelligent, modular snap-in design
- 30 FIMO soft colours
- 288 blocks à 57 g
- Display inlay
- 1 colour label

| | |
|------------|--|
| 0 | |
| white | |
| 70 | |
| sahara | |
| 105 | |
| vanille | |
| 10 | |
| lemon | |
| 16 | |
| sunflower | |
| 405 | |
| peach | |
| 42 | |
| tangerine | |
| 24 | |
| indian red | |
| 26 | |
| cherry red | |
| 43 | |
| pale pink | |

| | |
|----------------|--|
| 205 | |
| rosa | |
| 22 | |
| raspberry | |
| 61 | |
| purple | |
| 62 | |
| lavender | |
| 605 | |
| lilac | |
| 63 | |
| plum | |
| 35 | |
| windsor blue | |
| 33 | |
| brilliant blue | |
| 37 | |
| pacific blue | |
| 305 | |
| aqua | |

| | |
|----------------|--|
| 505 | |
| mint | |
| 39 | |
| peppermint | |
| 50 | |
| apple green | |
| 53 | |
| tropical green | |
| 56 | |
| emerald | |
| 76 | |
| cognac | |
| 7 | |
| caramel | |
| 75 | |
| chocolate | |
| 80 | |
| dolphin grey | |
| 9 | |
| black | |

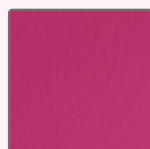
Perfectly suited for
trendy fashion accessories
and jewellery!



Trend colours



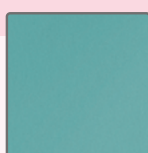
8020-T21
strawberry cream



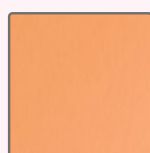
8020-T23
frozen berry



8020-T31
serenity blue



8020-T36
ocean wave



8020-T41
papaya sorbet



8020-T51
beach grass



FIMO® soft

COLOUR DISPLAY 8020 T24CA

Content: 36 blocks à 57 g, 6 colours,
dimensions: w 365 x d 250 x h 290 mm
(including topper; height header 160mm)
min. order quantity: 1



>> Shell earrings in trend colours <<

Our new trend colours evoke the desire for summer, sun, and sea! We'll show you how to create beautiful jewellery pieces with lovely cutters and elegant earrings. The shell shape will soon dangle from your ears, enhancing your trip to the sea. Perhaps you can already hear the sound of the surf?

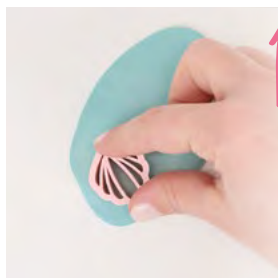
Find the full tutorial here:

 www.fimo.com  [@fimostaedtler](https://www.instagram.com/fimostaedtler)



FIMO® kids

FIMO® soft | effect



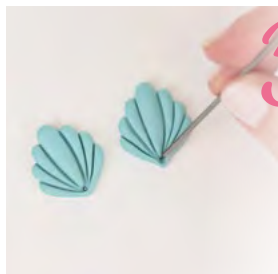
1.

Roll out the half block of FIMO soft in the trend colour "ocean wave". Use spacers (approx. 3 mm) to achieve an evenly thick sheet. Take the cutter and press it into the FIMO. For some cutters, it might be helpful to dip them in cornstarch or powder beforehand to prevent sticking.



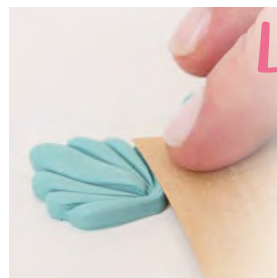
2.

Many cutters have a cutting outer edge and embossing shapes inside, so it's important that the sheet is thick enough. Gently remove the shell shapes from the surrounding FIMO.



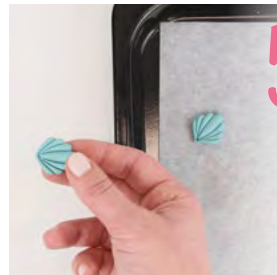
3.

To mount the metal ear studs, use the pearl piercing needle to create holes.



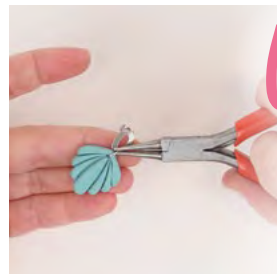
4.

You can add a textured surface to parts of your shell shapes. Press coarse-grained sandpaper gently onto the FIMO and lift it off.



5.

Place all elements in the oven at 110 °C for 30 minutes. Let them cool afterward.



6.

Bend the metal rings using pliers and thread the earrings and shell shapes onto the ring. Then close it again.



www.staedtler.com/shell-earrings

MATERIALIEN

- FIMO soft trend colour "ocean wave" 8020-T36
- Pearl piercing needle 8712 20
- Acrylic roller 8700 05
- Shell-shaped cutter
- Earrings
- Spacers
- Baking paper
- Coarse sandpaper
- Pliers

level

easy

crafting time

ca. 20 min

110 °C

30 min

FIMO® professional

FIMO® air

Noris® Modelling dough & Modelling clay





FIMO® soft

LARGE BLOCK 8021-..

454 g (1 lb), with portioning aid,
11 vibrant colours
min. order quantity: 1

Large block:
in 11 vibrant
colours!

| | | | |
|--------------------|--|----------------------|--|
| 0 white | | 43 pale pink | |
| 16 sunflower | | 33 brilliant blue | |
| 42 tangerine | | 53 tropical green | |
| 24 indian red | | 75 chocolate | |
| 26 cherry red | | 9 black | |
| 2 christmas red | | | |



Customise me!
Find out more about our customisable
FIMO displays from p. 75!

FIMO® soft

COLOUR DISPLAY 8020 VS

Content: 288 blocks à 57 g, 24 colours,
dimensions (with topper): approx. w 445 x d 400 x h 480 mm,
min. order quantity: 1





FIMO® soft

COLOUR PACK 'BASIC COLOURS' 8023 C12-1

Content: 12 half blocks à 25 g (white, lemon, raspberry, indian red, brilliant blue, peppermint, tangerine, tropical green, plum, caramel, dolphin grey, black),
instructions,
min. order quantity: 1



FIMO® kids

FIMO® soft | effect



FIMO® soft

COLOUR PACK 'BASIC COLOURS' 8023 C24-1

Content: 24 half blocks à 25 g (white, lemon, sunflower, tangerine, indian red, cherry red, raspberry, pale pink, purple, lavender, plum, windsor blue, brilliant blue, pacific blue, peppermint, emerald, tropical green, apple green, cognac, sahara, caramel, chocolate, dolphin grey, black),
instructions,
min. order quantity: 1



FIMO® professional



FIMO® soft

COLOUR PACK 'BRILLIANT COLOURS' 8023 C12-2

Content: 12 half blocks à 25 g (white, lemon, indian red, pacific blue, peppermint, frozen berry, tangerine, apple green, emerald, purple, lavender, strawberry cream),
instructions,
min. order quantity: 1



FIMO® air

Noris® Modelling dough & Modelling clay



FIMO® soft

COLOUR PACK 'PASTEL COLOURS' 8023 C12-3

Content: 12 half blocks à 25 g (white, pastel vanilla, beach grass, pastel rosé, pastel aqua, pastel peach, pale pink, pastel mint, pastel lilac, sahara, dolphin grey, serenity blue), instructions, min. order quantity: 1



FIMO® soft

COLOUR PACK 'NATURAL COLOURS' 8023 C12-4

Content: 12 half blocks à 25 g (white, sunflower, cherry red, windsor blue, beach grass, tangerine, pale pink, sahara, chocolate, cognac, dolphin grey, black), instructions, min. order quantity: 1



FIMO® soft

COLOUR PACK 'FASHION COLOURS' 8023 C12-5

Content: 12 half blocks à 25 g (metallic mother-of-pearl, galaxy turquoise, glitter rosé gold, metallic copper, papaya sorbet, beach grass, strawberry cream, serenity blue, frozen berry, ocean wave, metallic steel grey, glitter silver), instructions, min. order quantity: 1



The ideal set for
beginners



FIMO® soft

BASIC SET 8023 10

Content: 9 half blocks à 25 g,
1 bottle of gloss varnish, modelling
stick, modelling role,
instructions,
min. order quantity: 1



FIMO® soft

BASIC SET XXL 8023 15

Contents: 25 blocks à 57 g in 11 different colours,
5 modelling sticks, 5 modelling rolls, 5 rubber bands,
5 x 2 keyrings incl. chain,
instructions,
min. order quantity: 1



FIMO® EFFECT – EXQUISITE EXTENSION TO THE RANGE

Product information

- Oven-hardening modelling clay
- Effective addition to FIMO soft and FIMO professional
- Right degree of hardness for the respective effect
- 36 colours, 8 different effects (neon, nightglow, glitter, translucent, stone, metallic, galaxy, botanical)
- Practical division into 8 portions for easy blending
- Easy to open
- Infinitely versatile: for jewellery, accessories and home deco items

Colour display:

- Comprising 6 feed trays
- 1 compartment for presentation of brochures, flyers or give-aways
- Showcase for presenting finished sample "crystal"
- Intelligent, modular snap-in design
- 24 FIMO effect colours
- 288 blocks à 57 g
- Display inlay
- 1 colour label

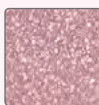


The perfect addition to FIMO soft and FIMO professional



NIGHTGLOW

Fluorescent, highly luminous colour



GLITTER

Various colours for items in glitter look



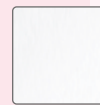
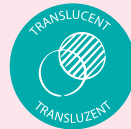
STONE

Colours for an extraordinary stone appearance



NEON

Luminous neon colours with a particularly bright black light effect



TRANSLUCENT

Colours for translucent objects



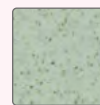
METALLIC

Colours with exquisite metallic effects thanks to miniature particles



PEARL

Colours with a sophisticated pearly lustre



BOTANICAL

Colours with a particularly natural look thanks to plant parts



FIMO® effect

STANDARD BLOCK 8010-..

57 g, 55 x 55 x 15 mm,
segmented into 8 portions,
36 colours, min. order quantity: 6



FIMO® kids

FIMO® soft | effect

FIMO® professional

FIMO® air

Noris® Modelling dough & Modelling clay

METALLIC COLOURS

| | | | | | |
|-----------------------|--|----------------|--|------------------|--|
| 08 mother of pearl | | 11 gold | | 27 copper | |
| 41 orange | | 21 bordeaux | | 61 purple | |
| 36 turquoise | | 31 blue | | 51 green | |
| 71 antique bronze | | 81 silver | | 91 steel grey | |

BOTANICAL COLOURS

| | | | | | |
|----------------|--|------------------|--|-----------------|--|
| 070 seaweed | | 170 sunflower | | 270 rose | |
| 570 spinach | | 670 mallow | | 770 rose hip | |

GALAXY COLOURS

| | | | | | |
|------------------|--|-------------|--|---------------|--|
| 002 white | | 202 red | | 602 purple | |
| 392 turquoise | | 352 blue | | 562 green | |

NEON COLOURS

| | | | |
|---------------|--|---------------|--|
| 101 yellow | | 401 orange | |
| 201 pink | | 501 green | |

TRANSLUCENT COLOUR

| | |
|--------------------|--|
| 014 translucent | |
|--------------------|--|

FLUORESCENT COLOUR

| | |
|------------------|--|
| 041 nightglow | |
|------------------|--|

GLITTER COLOURS

| | | | |
|---------------|--|-----------------|--|
| 112 gold | | 212 roségold | |
| 812 silver | | | |

STONE COLOURS

| | |
|----------------------|--|
| 803 granite | |
| 903 black granite | |
| 003 white granite | |

FIMO® effect

**COLOUR DISPLAY
8010 VS**

Content: 288 blocks à 57 g,
24 colours (glitter colours, translucent
colour, metallic colours, galaxy colours,
stone colours, nightglow colour and neon
colours), dimensions (with topper):
approx. w 445 x d 400 x h 480 mm,
min. order quantity: 1



Customise me!
Find out more about
our customisable FIMO
displays from p. 75!



FIMO® effect

**COLOUR PACK
8013 C12-1**

Content: 12 half blocks à 25 g (nightglow, translucent,
glitter white, glitter roségold, glitter gold, galaxy red,
glitter blue, galaxy green, galaxy purple, stone granite,
glitter silver, stone black granite), instructions,
min. order quantity: 1



FIMO® effect

**COLOUR PACK
8013 C24-1**

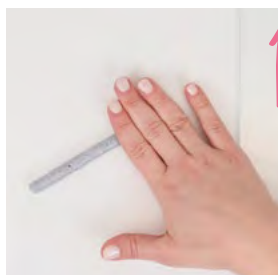
Content: 24 half blocks à 25 g (translucent, nightglow,
metallic mother of pearl, galaxy white, neon yellow, metallic gold,
neon orange, metallic orange, neon pink, glitter roségold,
galaxy red, galaxy purple, metallic purple, botanical rose,
metallic silver, botanical spinach, galaxy green, neon green,
metallic turquoise, galaxy blue, glitter silver, stone granite,
stone black granite, metallic steel grey),
instructions,
min. order quantity: 1





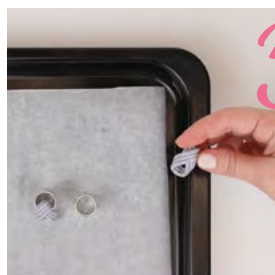
>> FIMO® effect botanical colours „loop earrings“<<

With the new FIMO botanical colours and its fine plant parts, you can create wonderfully natural-looking pieces of jewellery. Get started right away and in an hour you will have beautiful earrings dangling from your ears!



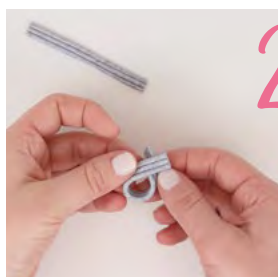
1.

Take half of the FIMO botanical half-block and roll it into a string. Then use the blade to divide it into three equal parts. Roll out the string further. To achieve an even thickness, stick spacer (e.g. wooden sticks) under a glass plate and use them to roll out the cords.



3.

You can place two ovenproof supports under the hangers to stabilise them. Place all the elements in the oven at 110 °C for 30 minutes. Leave them to cool down afterwards. To be able to connect your moulds to the earrings after hardening, you need to drill small holes in them with the hand drill



2.

Lay the three cords together and press them together evenly. You will need two pieces of 8 cm each for the earrings. Cut them off using the blades. Lay the two ends of the ribbon on top of each other to create a drop shape inside the loop. Let the ends protrude slightly and bend them backwards.



4.

Use pliers to blend the metal earrings open and push them through the hole. Then close them again. Your earrings will be particularly shiny if you coat them with gloss varnish. Allow the coat to dry thoroughly afterwards.

MATERIALS

- FIMO effect botanical colour of your choice
- FIMO blade set 8700 04
- FIMO gloss varnish 8703 01 BK
- FIMO oven thermometer 8700 22
- Earrings
- Spacer (e.g. wooden sticks)
- Glass plate
- Ruler
- Baking paper
- Pliers
- Hand drill

level crafting time 110 °C



easy



ca. 20 min



30 min



art. no. 0V082E3008
FIMO effect botanical colours mini flyer
dimensions: 10 x 10 cm
Includes product information as well
inspiring step-by-step instructions



art. no. 0M080J3600
FIMO effect botanical colours giveaway



FIMO® effect

COLOUR DISPLAY 8010CA36-1

Content: 36 blocks à 57 g, 6 colours,
dimensions: w 365 x d 250 x h 290 mm
(including topper; height header 160 mm)
min. order quantity: 1



Discover FIMO botanicals



www.staedtler.com/fimo-botanicals



FIMO® effect

COLOUR PACK 8013 C12-3 'NEON COLOURS'

Content: 12 half blocks à 25 g
(neon yellow, white, neon orange,
neon pink, purple, peppermint,
metallic steel grey, neon green,
caramel, chocolate, 2x black),
instructions,
min. order quantity: 1



FIMO® effect

MATERIALPACKUNG 8013 C10-1 'MIXING PEARLS'

Content: 8 half blocks à 25 g
(metallic gold, metallic copper,
metallic silver, cherry red, lemon,
raspberry, emerald and brilliant blue)
2 standard blocks à 57 g
(metallic mother of pearl)
mixing chart, instruction
min. order quantity: 1



FIMO® effect

COLOUR PACK 8013 C12-4 'SPARKLE COLOURS'

Content: 12 half blocks à 25 g
(galaxy white, metallic gold,
metallic antique bronze, glitter gold,
glitter silver, glitter roségold,
galaxy purple, galaxy red,
galaxy turquoise, galaxy green,
galaxy blue, metallic steel grey),
instructions,
min. order quantity: 1



FIMO® effect

COLOUR PACK 8013 C12-5 'BOHO COLOURS'

Content: 12 half blocks à 25 g
(botanical seaweed, botanial sunflower,
botanical rose, botanical mallow, rose,
botanical spinach, botanical rose hip,
stone white granite, stone granit,
metallic orange, metallic bordeaux,
stein black granite, metallic antique bronze),
instructions,
min. order quantity: 1



Learn HOW TO CREATE...!

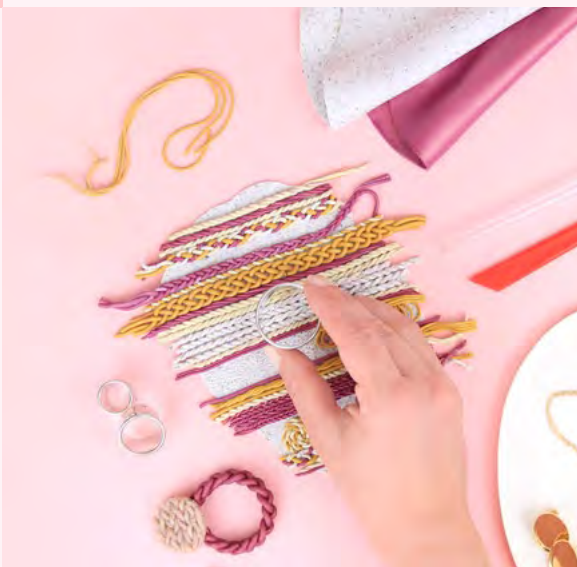
- Whether wood, denim, knit or marble design – with the FIMO HOW-TO-CREATE sets learn step by step how to create fascinating modelling techniques!
- The FIMO HOW-TO-CREATE sets include step-by-step pictures and Video tutorials, the most important accessories and also an attractive and useful add-on.
- Get yourself and your customers in the crafty mood with 6 different sets: Wood, Denim, Knit & Braid, Slab, Abalone and Marble.
- Especially for beginners and hobby artists. Create impressive effects and techniques with ease.
- Including trendy application ideas
- Soft and smooth
- For jewellery, accessories and home decoration
- The new jewellery sets 8625 SET are an attractive addition to the FIMO HOW-TO-CREATE sets
- Free add-on: Jewellery display card – perfect for gifting



art. no. 8625 SET1



art. no. 8025 HTC6



FIMO® effect

HOW-TO-CREATE SET DISPLAY 8025HTCCA2

Contents: 18 sets (each 3 How-to-create sets "wood design", "denim design", "slab design", "abalone design", "marble design", "knit and braid design"),
dimensions (with topper): ca. w 400 x d 600 x h 270 mm,
min. order quantity: 1



FIMO® effect

HOW-TO-CREATE SET 8025 HTC1 'WOOD DESIGN'

Contents: 4 half blocks à 25 g, brush,
modelling roller, modelling stick,
jewellery cards,
instructions,
min. order quantity: 1



FIMO® effect

HOW-TO-CREATE SET 8025 HTC2 'DENIM DESIGN'

Contents: 4 half blocks à 25 g, jeans fabric pattern,
Lumocolor acrylic marker, modelling roller,
modelling stick, jewellery cards,
instructions,
min. order quantity: 1





FIMO® effect

HOW-TO-CREATE SET 8025 HTC3 'SLAB DESIGN'

Contents: 4 half blocks à 25 g, 3 metal cutters „circle”,
modelling roller, modelling stick, jewellery cards,
instructions,
min. order quantity: 1



FIMO® effect

HOW-TO-CREATE SET 8025 HTC4 'ABALONE DESIGN'

Contents: 4 half blocks à 25 g, 1 bottle of gloss varnish,
Noris pencil, modelling stick, jewellery cards,
instructions,
min. order quantity: 1



FIMO® effect

HOW-TO-CREATE SET 8025 HTC5 'MARBLE DESIGN'

Contents: 4 half blocks à 25 g, metal cutters „diamond”,
modelling stick, jewellery cards,
instructions,
min. order quantity: 1



FIMO® effect

HOW-TO-CREATE SET 8025 HTC6 'KNIT AND BRAID DESIGN'

Contents: 4 half blocks à 25 g, 3 metal cutters „circle”,
modelling stick, jewellery cards,
instructions,
min. order quantity: 1



JEWELLERY SETS

The new jewellery sets 8625 SET are an attractive addition to the FIMO HOW-TO-CREATE sets!



FIMO®

JEWELLERY SETS 8625 SET1

Contents: 2 stud earrings, 10 split rings,
transparent rubber band, ball necklace,
1 row necklace, bracelet
min. order quantity: 1



FIMO®

JEWELLERY SETS 8625 SET2

Contents: 2 earrings, 2 eye pins, 10 metal tubes,
ring frame, 5 row necklace,
min. order quantity: 1



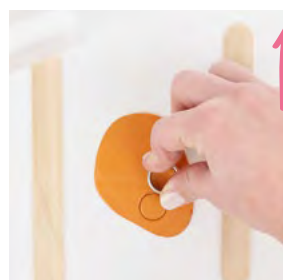


>> Flower earrings in FIMO® effect botanical <<

If spring is taking its time, we'll create our own little blossoms! With the new FIMO effect botanical colours and their fine plant parts, you can craft wonderfully natural-looking jewellery – whether in the Sunflower, Mallow, or Rose shade, FIMO effect botanical offers six natural tones. And when combined with an eyecatcher from FIMO effect metallic, you'll surely catch everyone's gaze. Enjoy the DIY!

Find the full tutorial here:

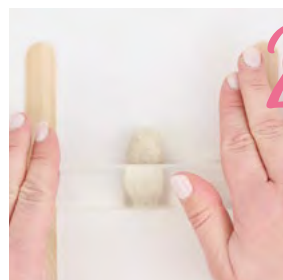
 www.fimo.com  [@fimostaedtler](https://www.instagram.com/fimostaedtler)



1. Start by rolling out the FIMO effect metallic orange with the acrylic roller. Place two wooden spatulas next to it to achieve an even sheet thickness. Next, cut out two small orange circles, which will later form the centre of your flowers.



4. To connect your shapes with the stud after hardening, use the pearl piercing needle to make small holes. Place all elements in the oven at 110 °C for 30 minutes.



2. Roll out the FIMO effect sunflower as well. Cut out a total of 10 small circles, which will serve as the flower petals. Place your thumb in the center of each circle and pull slightly at one point to create small droplet shapes. Place 5 droplet shapes in a ring on baking paper and press the edges together slightly.



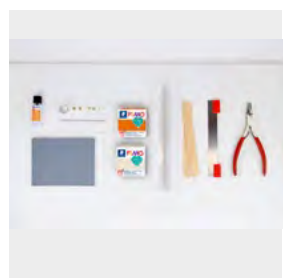
5. After cooling, sand the edges of your small jewellery pieces with fine sandpaper. Your earrings will have a particularly glossy finish if you apply clear varnish. We only applied varnish to the coloured centre. Allow the layer to dry thoroughly.



3. In the centre of the flower, place a small ball made of a quarter-circle of FIMO botanical sunflower. Then cover it with an orange circle of FIMO effect metallic. Press it only at the edges, so the centre of the flower slightly curves upward.



6. Open one of the jump rings with pliers and thread the flower onto it, then close it. Next, open another jump ring and thread the ear stud and the flower onto its ring. Ensure you thread them in the correct orientation. Close this jump ring as well.



MATERIALS

- FIMO effect botanical "sunflower" 8010-170
- FIMO effect metallic "orange" 8010-41
- Acrylic roller 8700 05
- Blade set 8700 04
- Pearl piercing needle 8712 20
- Sanding sponges 8700 08
- Gloss varnish 8703 01 BK
- Oven thermometer 8700 22
- Small circle cutter
- Jump rings
- Ear studs
- Spacers
- Pliers
- Baking paper

level

easy

crafting time

ca. 30 min

110 °C

30 min

FIMO® LIQUID UND FIMO® MIX QUICK

Product information

FIMO® liquid

- Oven-hardening liquid gel
- Especially for beginners, hobby artists and professionals
- Thick, fluid consistency
- 4 different colours:
 - **Translucent** – especially clear and translucent
 - **Metallic gold** and **silver** – with shimmering pearlescent effect
 - **Black** – well covering colour brilliance
- Extremely flexible after hardening
- Ideal complement for FIMO modelling clay: compatible with FIMO soft, FIMO effect and FIMO professional

- Practical dosage tip for pinpoint application and clean handling
- Can be used in bakeable silicone moulds
- Resealable plastic bottle
- To embellish FIMO clays as well as a bond of hardened with non-hardened FIMO items
- Ideal for contouring and grouting techniques
- Image transfer from prints, graphite and pencil drawings
- Glaze effects: pure or dyed with FIMO modelling clay
- Mixing techniques: e.g. marbling and colour gradients
- Detailed instruction can be scanned via QR code

FIMO® mix quick:

- Clay softener
- Extra soft material for kneading into firm FIMO
- For an easier and faster softening of firm FIMO



Glaze effect with modelling clay



FIMO® liquid

LIQUID GEL, 50 ml 8050-..

Content: Plastic bottle with dosage nozzle, hangable, reclosable, min. order quantity: 6

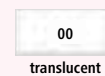


Image transfer

Available in a shelf-ready display!
p. 45



FIMO® liquid

SHELF-READY DISPLAY 8051-00



Content: Plastic bottle with dosing nozzle,
resealable, 6 bottles
in a cardboard presenter
min. order quantity: 6



FIMO® kids

FIMO® soft | effect



FIMO® mix quick

MIX QUICK 8026



Content: 100 g block,
min. order quantity: 10



FIMO® professional

FIMO® air



BEAUTIFUL JEWELLERY

Product information

Bead roller:

- Bead roller for bicone, olive and ball beads
- Incl. detailed leaflet

Bead piercing needles:

- 50 bead piercing needles in 2 thicknesses (Ø 0.8 mm and Ø 1.7 mm)
- In reclosable plastic tube
- For distortion-free piercing of modelled objects and beads



FIMO®

BEAD ROLLER 8712

Content: 1 bead roller (bicone, olive and ball beads), instructions, min. order quantity: 3



bicone:
11 x 11 mm



olive:
8 x 16 mm



ball:
Ø 11 mm



FIMO®

BEAD PIERCING NEEDLES 8712 20

Content: 50 bead piercing needles, min. order quantity: 1



CREATIVE ACCESSORIES

Suitable for FIMO®
and FIMO® air!

Product information

- Tools and appliances designed specifically for the use with FIMO
- Multiplies the possibilities for the perfect finish
- Safe handling, accurate results

Oven thermometer:

- With red silicone cover – heat protection for hands
- Easy-to-read dial
- Hook for hanging in oven
- Range 0 - 300 °C, temperature tolerance +/- 2 %

Shaped cutters:

- 6 different metal mini shaped cutters

Grind'n polish set:

- Sanding sponges for dry and wet sanding and smoothing of hardened FIMO surfaces
- 3 different grades (fine, superfine, microfine)
- For round and curved surfaces
- Easy to wash out, reusable

Modelling tools:

- Sets with 4 different plastic modelling sticks

Acrylic roller:

- For evenly rolling out FIMO
- For a particularly smooth surface

Blade sets:

- High-quality blades for clean-cut edges
- Precise cutting results
- Made of stainless steel
- Rubber grip for preventing injury



FIMO®

STAMP KIT 8700 09

- Ideal for beginners and hobby artists
 - Easy individualization of FIMO and FIMOair
 - A selection of 88 characters offers a variety of compilation options
 - The 88 characters include: 49 letters from A to Z; 19 numbers from 0-9; 20 special characters
 - Letter height: approx. 5 mm
 - Plastic holder approx. 10 cm in the well-known FIMO red for precise stamping
- min. order quantity: 5





FIMO®

OVEN THERMOMETER 8700 22

- With red silicone cover – heat protection for hands
- Easy-to-read dial
- Hook for hanging in oven
- Range 0 - 300 °C, temperature tolerance +/- 2 %
min. order quantity: 1



FIMO®

SHAPED CUTTERS 8724 03

- 6 different metal mini shaped cutters
- size: Ø 2 cm,
min. order quantity: 5



FIMO®

GRIND'N POLISH SET 8700 08

- Sanding sponges for dry and wet sanding and smoothing of hardened FIMO surfaces
- 3 different grades (fine, superfine, microfine)
- For round and curved surfaces
- Easy to wash out, reusable
min. order quantity: 5



FIMO®

MODELLING TOOLS 8711

- Sets with 4 different plastic modelling sticks
min. order quantity: 10





FIMO®

ACRYLIC ROLLER 8700 05

- For evenly rolling out FIMO
 - For a particularly smooth surface
- size: Ø 25 mm, 20 cm,
min. order quantity: 1



FIMO®

MIXED BLADE SET, 3 PIECES 8700 04

- High-quality blades for clean-cut edges
 - Precise cutting results
 - Made of stainless steel
 - Rubber grip for preventing injury
- min. order quantity: 1



FIMO® kids

FIMO® soft | effect

FIMO® professional

FIMO® air

Noris® Modelling dough & Modelling clay

IMPRESSIVE FINISHES

Suitable for FIMO®
and FIMO® air!

Product information

- Impressive finishes for modelled objects

Leaf metal:

- For a variety of creative ideas
- Adheres to many different surfaces
- Easy-to-understand technique
- 10 sheets à 14 x 14 cm
- With corresponding size and surface varnishes

Varnishes:

- Good adhesion and scratch-resistance properties
- For surface protection
- Milky consistency, transparent when dry
- Lightfast
- Water-based
- Gloss: for brilliant, high-gloss finishes
- Semi-gloss: for shimmering, semi-gloss finishes



FIMO®

LEAF METAL 8781-..

Content: 10 sheets in cardboard pack,
dimensions: 14 x 14 cm,
min. order quantity: 5



11 gold



26 copper



81 silver





FIMO®

SIZE FOR LEAF METAL 8782 BK

Content: Jar à 35 ml,
min. order quantity: 5



FIMO®

GLOSS VARNISH 8703 01 BK

Content: Bottle à 10 ml,
brush in cap,
min. order quantity: 5



FIMO®

GLOSS VARNISH 8704 01 BK

Content: Jar à 35 ml,
min. order quantity: 5



FIMO®

SEMI-GLOSS VARNISH 8705 01 BK

Content: Jar à 35 ml,
min. order quantity: 5







STAEDTLER®

Head of ideas.



made for
STUNNING
DETAILS

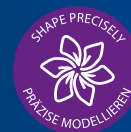
FIMO® PROFESSIONAL – THE CLAY FOR THE HIGHEST OF DEMANDS



FIMO® professional

STANDARD BLOCK 8040-..

57 g, 55 x 55 x 24 mm,
segmented into 8 portions,
24 brilliant colours,
min. order quantity: 6



Product information

- High-quality premium modelling clay for advanced users, artists and professionals
- Firm consistency and very high dimensional stability for particularly delicate work and special techniques such as Caning, Mokume Gane and Bargello
- Exceptional fracture resistance and solid flexibility (thin parts) after hardening
- Reliable high-quality standards for high demands
- Careful selection of pigments based on type, purity and concentration
- 24 brilliant colours, incl. 5 True colours
- Coordinated colours from the classic colour wheel enable an unbelievable spectrum of colour nuances through simple mixing
- Defined neutral colours perfectly complement the FIMO professional colour range and are ideal for lightening, darkening or toning colours accordingly
- Practical division into 8 portions for easy blending
- Compatible with FIMO soft and FIMO effect

- Standard block, 57 g (2 oz)
- Easy to open
- Infinitely versatile: For jewellery, accessories and home decor
- Different colour packs

Colour display:

- Comprising 6 feed trays
- Showcase for presenting finished sample "flower"
- Intelligent, modular snap-in design
- 24 FIMO professional colours
- Incl. Display inlay and colour labels

| | | | |
|--------------------|---------------------|-------------------|--------------------|
| 0 white | 29 carmine | 34 navy blue | 57 leaf green |
| 02 champagner | 23 bordeaux | 3 royal blue | 74 terracotta |
| 100 true yellow | 20 dusty pink | 300 true blue | 77 chocolate |
| 17 ochre | 210 true magenta | 36 petrol | 87 taupe |
| 4 orange | 61 violet | 500 true green | 80 dolphin grey |
| 200 true red | 6 lilac | 51 light green | 9 black |



FIMO® professional

LARGE BLOCK 8041-..

454 g (1 lb), with portioning aid, 12 brilliant colours,
min. order quantity: 1

| | | | | | |
|------------------|--|--------------------|--|---------------------|--|
| 0 white | | 45 sand | | 210 true magenta | |
| 03 porcelain | | 435 cameo | | 300 true blue | |
| 44 beige | | 100 true yellow | | 50 dolphin grey | |
| 02 champagner | | 200 true red | | 9 black | |



FIMO® professional

MEDIUM BLOCK 8042-..

226 g, with portioning aid, 6 brilliant colours,
min. order quantity: 1

| | | | |
|-----------------|--|--------------|--|
| 0 white | | 45 sand | |
| 03 porcelain | | 435 cameo | |
| 44 beige | | 9 black | |



Individually customizable! Find out
more about our variable FIMO displays
from page 75!

FIMO® professional

COLOUR DISPLAY 8040 VS

Content: 24 colours, 288 blocks 57 g,
dimensions (with topper): approx. w 445 x d 400 x h 480 mm,
min. order quantity: 1





FIMO® professional

COLOUR PACK 'TRUE COLOURS' 8043 C6-1

Content: 6 blocks à 57 g (white, true yellow, true red, true magenta, true blue, true green), blending table, min. order quantity: 1



FIMO® kids

FIMO® soft | effect



FIMO® professional

COLOUR PACK 'BASIC COLOURS' 8043 C12-1

Content: 12 half blocks à 25 g (white, champagne, true yellow, true red, true magenta, true blue, orange, true green, violet, terracotta, dolphin grey, black), instructions, min. order quantity: 1



FIMO® professional

FIMO® air

Noris® Modelling dough & Modelling clay



FIMO® professional

COLOUR PACK 'TRUE COLOURS' 8043-S1

Content: 4 blocks a 25 g
(true yellow, true red, true magenta, true blue),
instructions,
min. order quantity: 1



FIMO® professional

COLOUR PACK 'NATURAL COLOURS' 8043-S2

Content: 4 blocks a 25 g
(white, champagne, terracotta, black),
instructions,
min. order quantity: 1







STAEDTLER®

Head of ideas.



Air-drying modelling clays
no bake. **JUST MAKE.**

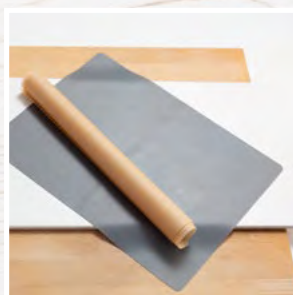
Tips & Tricks

for working with FIMO® air (air-drying)



[www.staedtler.com/
FIMOair](http://www.staedtler.com/FIMOair)

Scan and discover

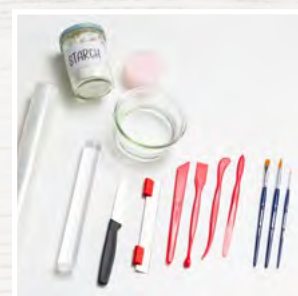


The right working surface

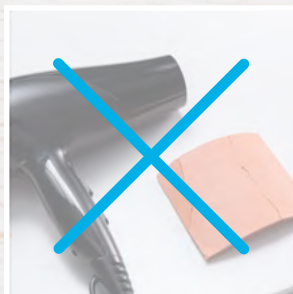
A wide variety of surfaces are suitable as a working surface. These include **tiles, smooth wooden boards, silicone mats or baking paper**. However, you should not work with FIMOair on glass surfaces – the modelling clay can stick to them.

The right tools

For the FIMOair project to be a complete success, the right basic equipment is essential: **a rolling pin for rolling out, sponges, brushes, modelling tools, a blade or knife** and a small **bowl** of water are essential.



Drying



The time it takes for the FIMOair to harden depends on the **wall thickness, size, room temperature and humidity** and can take several days. If possible, the work of art should dry slowly at **cooler temperatures** – this ensures greater resistance to cracking and deformation. It is important not to use a hairdryer, as models can deform or crack. To ensure that the modelled object dries evenly, it should be turned over during the drying process.



The optimal storage of FIMO® air

Small leftovers can be stored in an **airtight container such as a screw-top jar** with a few drops of water. The same applies to packages that have already been opened - these should also be stored in an airtight container at **room temperature** and conditioned with **a few drops of water** - especially if the mixture is to be stored for a longer period of time. If the FIMOair leftovers are no longer needed, they can simply be disposed of with residual waste.



Creating accents with structured surfaces

Using **texture sheets or simple everyday objects** like a sponge, a lace doily or a leaf, great patterns can be created onto the modelled sheet. Just lay it on, press gently and carefully pull it off.

Embellishing

With leaf metal, gloss or matt varnishes you can easily achieve stunning effects. After hardening your creation in the oven simply apply some size for leaf metal with a brush and carefully press the leaf metal onto the FIMOair. Afterwards seal it with gloss varnish. Using **light and gloss effects** to create **shimmering accents** makes your FIMOair creation an eye-catcher.



More tips and tricks
on www.fimo.com



with tips, tricks
and inspirations

FIMOair tear-off-pads for
the POS with inspirational
step-by-step-tutorials

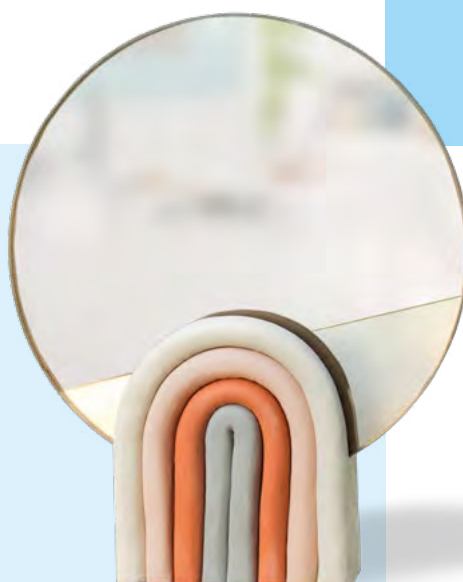
FIMOair lookbook
14,8 x 21 cm, 16 pages
art. no. DE: 0V081L3008
art. no. EN: 0V081L6000



art. no. 0V081M0
FIMOair and FIMOair light



art. no. 0V081N0
FIMOair wood-effect and
FIMOair granite-effect



CLAYLIKE



You enjoy modelling with clay, but the effort is too much for you?

FIMOair with its clay-like texture is perfect for producing all kinds of objects.

SAND



The edges of your creation are a little bit humpy?

Then just sand them and make them soft and smooth.

SAW



You need to adapt your creation?

That's okay. You can use a saw for modelling clay for example to remove unwanted parts.

AIR-DRYING



No bake – just make. Is it really that easy?

Yes! No kiln or oven is needed for producing all kinds of objects – it dries in the air!

CARVE, DRILL, FILE



You want to hang up your project?

No problem – just drill some holes.

PAINT & VARNISH



Just white is not exciting enough?

Grab some acrylic paints or even permanent marker and add to your pieces your own personal touch.

Not shiny enough?

No need to worry – put some varnish on top and your project will shine and shimmer.

>>DIY bowl made of air-drying FIMO® air<<



These self-made bowls made of FIMOair are perfect for all small items such as jewellery, cosmetics, keys or paper clips.

With that the chaos and searching has finally come to an end!

Find the full tutorial here:

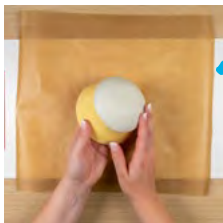
 www.fimo.com  [@fimostaedtler](https://www.instagram.com/fimostaedtler)

| | |
|---|---|
| Level | crafting time |
|  |  |
| easy | ca. 20 min |



1. Roll out a block of FIMOair in white with the acrylic roller to form an approx. 6mm thick sheet on a piece of baking paper. Take a round cookie cutter with the size of your choice (e.g. 10cm) and cut out the basic shape of your bowl.

Tip: In order to achieve an even thickness, you can put a pencil next to the mass to be rolled out and roll over it with the acrylic roller. These „spacers“ ensure that your plate is evenly thick.



2. Place the cut-out circle on your porcelain or glass bowl, press it gently so that it hugs the bowl. This then results in a beautiful, semicircular shape for your bowl.



3. Smooth everything with wet hands. You can smooth out cracks, transitions, and bumps with the dampened modelling stick or with a dampened finger. Now let your clay bowl dry on the bowl for at least 24 hours at room temperature.

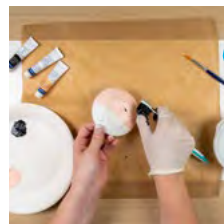


4. When your bowl is done drying, carefully remove it from the bowl. Also check whether the inside of the bowl has dried, if not, put the bowl aside again and let it dry. You can easily sand off sharp edges or bumps with the dampened sanding sponge.

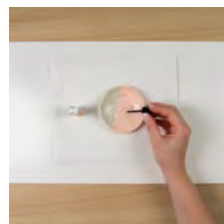


5. Now it's time to paint! Take acrylic paints of your choice and paint your bowl according to your ideas. Let the paint dry well.

Tip: You can easily mix the colours with each other and thus have an even larger choice of colours.



6. A few splashes of paint now look great. Mix any colour, such as black with a little water, and pick up the colour with a toothbrush. Put on a disposable glove. Now you stroke the bristles with your thumb so that splatters appear on your bowl. Let everything dry well.



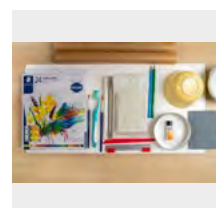
7. Finally, paint your bowl with FIMO gloss varnish and let it dry well again. The varnish makes the bowl shine like glazed ceramic and protects against moisture and dirt.

If you feel like it, you are welcome to design additional bowls in different sizes and colours. Your creativity knows no limits!

MATERIAL

- FIMOair "white" 8100-0
- acrylic roller 8700 05
- FIMO modelling tool 8711
- blade set 8700 04
- FIMO gloss varnish 8703 01 BK
- FIMO sanding sponges (8700 08)

- Design Journey synthetic brush 989 SBK3-3
- Design Journey acrylic paints 8500 C24
- toothbrush
- backing paper
- 2 pencils (hexagon) as a spacer
- small bowl of water to moisten your fingers



- paper plate or base for acrylic paint
- disposable gloves
- round cookie cutters
- small bowl (about the same diameter as the cookie cutter)

FIMO® air – AIR-DRYING MODELLING CLAYS

Product information

- Air-drying modelling clays
- With natural substances
- Ideal for art, recreation and hobby as well as for educational purposes in schools, kindergartens and other similar facilities



FIMO® air

- Clay-like
- Ready to use
- Dimensionally stable, neutral smell
- Smooth consistency
- Foil packaging prevents the drying out of the modelling clay

- Hardened models can be modified (filed, sanded, drilled, painted, varnished)
- Contains at least 95 % natural substances



FIMO® air light:

- Extra light
- Ready to use
- Dimensionally stable, neutral smell
- Smooth consistency
- Foil packaging prevents the drying out of the modelling clay

- Hardened models can be modified (filed, sanded, drilled, painted, varnished)
- Contains at least 84 % natural substances



FIMO® air wood-effect:

- Wood-like
- Ready to use
- Dimensionally stable, neutral smell
- Smooth consistency
- Foil packaging prevents the drying out of the modelling clay

- Hardened models can be modified (filed, sanded, drilled, painted, varnished)
- Contains at least 95 % natural substances



FIMO® air granite-effect:

- Granite-like touch & feel
- Ready to use
- Dimensionally stable, neutral smell
- Smooth consistency
- Foil packaging prevents the drying out of the modelling clay

- Hardened models can be modified (filed, sanded, drilled, painted, varnished)
- Contains at least 85 % natural substances



*Modelling
without a kiln!*



FIMO® air

BLOCK 250 g 8103-..

1 block, 250 g, 4 colours,
min. order quantity: 12



FIMO® air

BLOCK 500 g 8100-..

1 block, 500 g, 4 colours,
min. order quantity: 12



FIMO® air

BLOCK 1000 g 8101-..

1 block, 1000 g, 4 colours,
min. order quantity: 6



FIMO® air

BLOCK 2000 g 8102-0

1 block, 2000 g, 1 colour,
min. order quantity: 1



0
white



FIMO® kids

FIMO® soft | effect

FIMO® professional

FIMO® air

Noris® Modelling dough & Modelling clay

FIMO[®] air light
BLOCK 125 g
8133-..

 1 block, 125 g, 2 colours,
 min. order quantity: 10
FIMO[®] air light
BLOCK 250 g
8131-..

 1 block, 250 g, 2 colours,
 min. order quantity: 12
FIMO[®] air light
BLOCK 350 g
8130-0

 1 block, 350 g, 1 colour,
 min. order quantity: 6




FIMO® air wood-effect

BLOCK 350 g
8150-W7

 1 block, 350 g, 1 colour,
 min. order quantity: 12


W7

wood



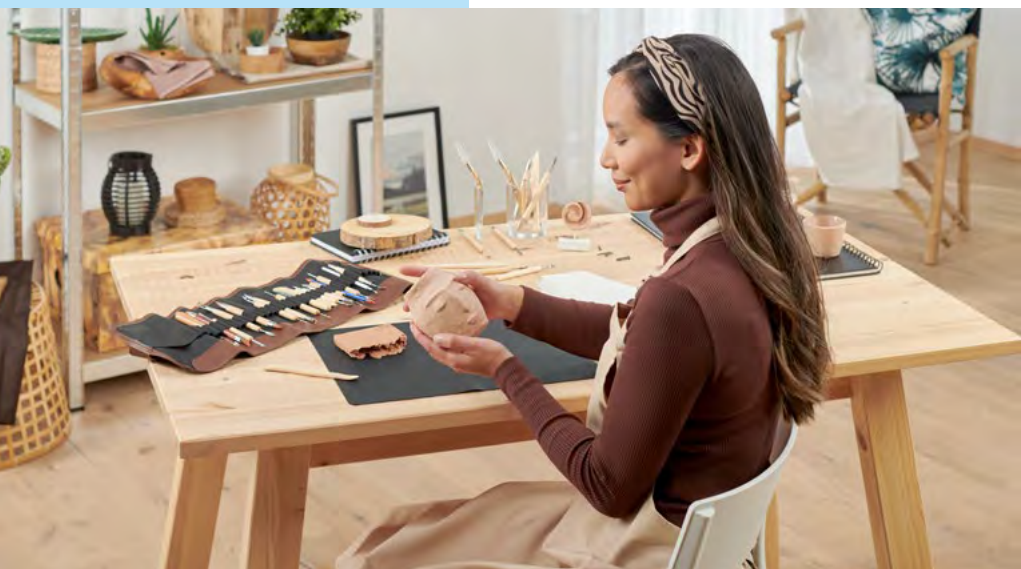
FIMO® kids

FIMO® soft | effect

FIMO® professional

FIMO® air

Noris® Modelling dough & Modelling clay

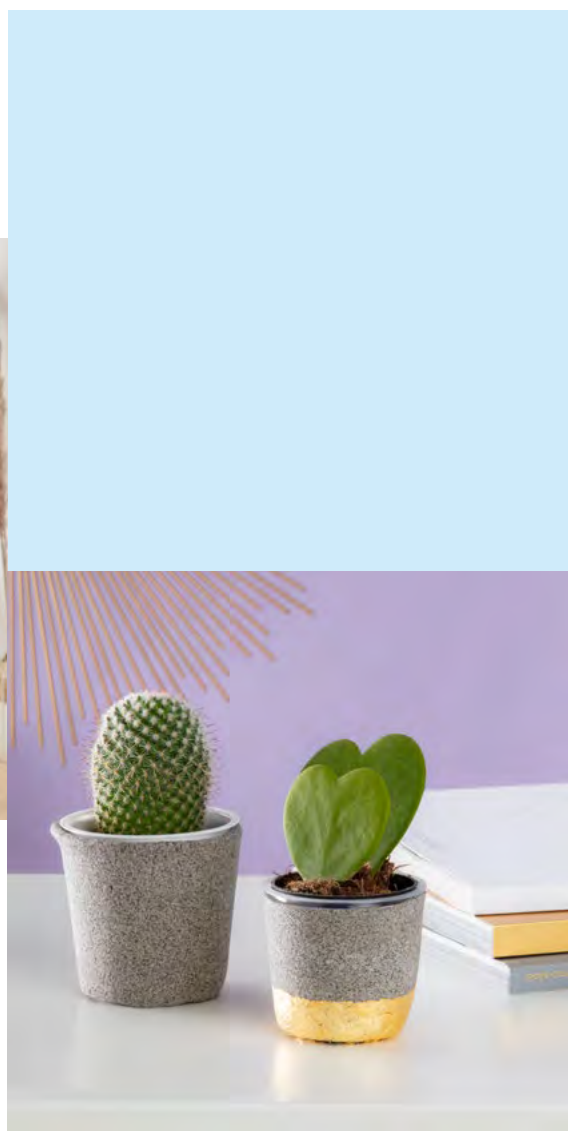




FIMO^{air} granite-effect

BLOCK 350 g 8150-G8

1 block, 350 g, 1 colour,
min. order quantity: 12





FIMO® air

BASIC SET 81 SET 01

Contents: 500 g FIMOair white, sanding paper, 1 bottle gloss varnish, paint box incl. brushes, modelling stick, modelling roller, min. order quantity: 1



FIMO® air

KEEPSAKE SET 81 SET 03

Contents: 125 g FIMOair light white, yarn, stamp set, modelling roller min. order quantity: 1



FIMO® air

EASTER SET 81 SET 04

125 g FIMOair light white, paint box incl. brushes, modelling stick, modelling roller min. order quantity: 1



FIMO® air

HALLOWEEN SET 81 SET 06

Contents: 350 g FIMOair granite-effect, Modelling tool set, paint box incl. brushes, modelling roller, min. order quantity: 1

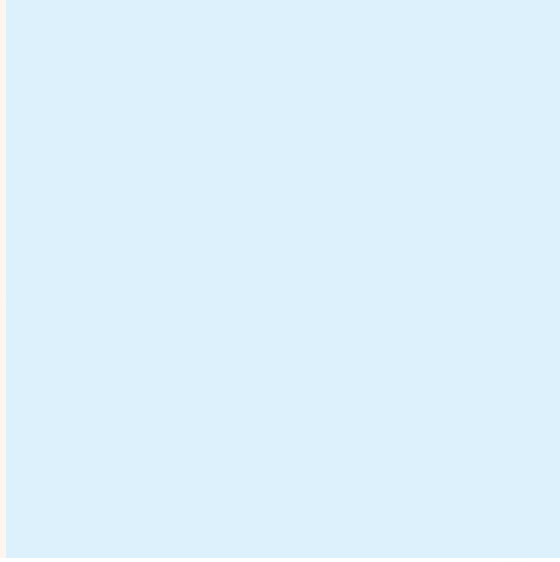
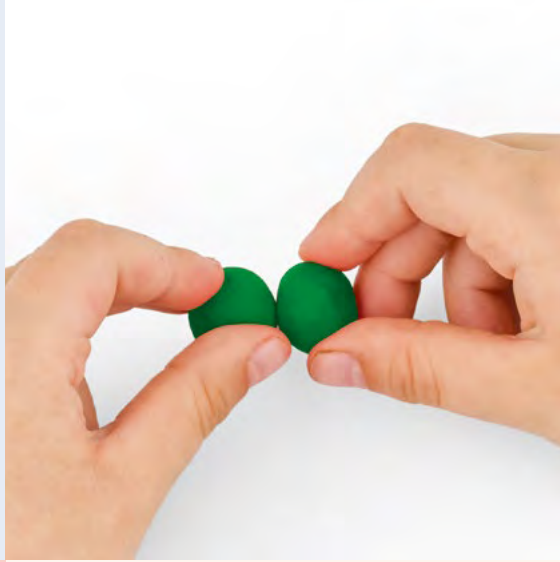
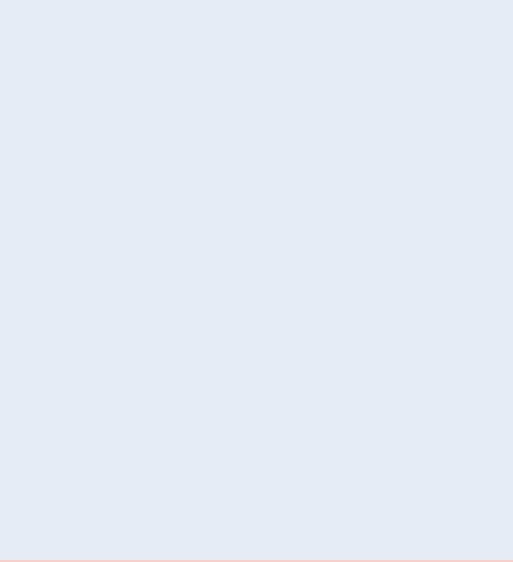


FIMO® air

CHRISTMAS SET 81 SET 07

Inhalt: 500 g FIMOair white, 2 wooden discs inkl. bar, paint box incl. brushes, modelling stick, modelling roller, min. order quantity: 1





NORIS® MODELLING CLAY

Ideal for school and kindergarten!

NORIS® MODELLING DOUGH & CLAY

Product information

Noris® junior play dough:

- Exceptionally soft and clean
- Easy to knead, cut, blend, squeeze and roll out
- Does not stick
- Ideal for developing a feeling for shape and colour through playing
- CE-conform
- Dermatologically tested



Noris® junior Modelling dough

SET 'BASIC COLOURS' 8134 01

Set, containing 4 pots à 130 g, in 4 basic colours (yellow, red, green, blue), min. order quantity: 6



Does not stick!



Noris® junior Modelling dough

SET 'SPECIAL COLOURS' 8134 02

Set, containing 4 pots à 130 g, in 4 special colours (orange, pink, green, violet), min. order quantity: 6



NORIS® JUMBO PLASTICINE CLAY

Product information

Noris® jumbo plasticine clay:

- Ideal for school and kindergarten
- Remains pliable and retains its shape
- Colours can be blended
- CE-conform
- Dermatologically tested



Noris® jumbo plasticine clay

STANDARD-COLOURS 842 C6

Cardboard box containing 6 sticks in 6 different colours (white, yellow, red, green, blue, brown), min. order quantity: 6



Noris® jumbo plasticine clay

GLITTER-COLOURS 842M C6

Cardboard box, contains 6 rods in different colours (glitter yellow, glitter red, glitter violet, glitter light blue, glitter blue, glitter green), min. order quantity: 6



Noris® jumbo plasticine clay

NEON-COLOURS 842F C6

Cardboard box, contains 6 poles in different colours (neon yellow, neon orange, neon blue, neon pink, neon green, neon red), min. order quantity: 6



Noris® jumbo plasticine clay

PASTEL-COLOURS 842P C6

Cardboard box, contains 6 sticks in different colours (pastel yellow, pastel melon, pastel pink, pastel purple, pastel blue, pastel green), min. order quantity: 6



Noris® jumbo plasticine-clay

STANDARD BLOCK, 1000 g 8421-..

1 block, 1000 g, 6 colours, min. order quantity: 1



-0 white



-1 yellow



-5 green



-7 brown



-2 red



-37 blue



FIMO® COLOUR DISPLAY

Product information

- Individually combinable
- Comprising feed trays
- Compartment for presentation of brochures, finished samples or give-aways
- Intelligent, modular snap-in design
- Showcase for presenting hardened FIMO samples
- Up to 24 colours and 288 blocks à 57 g
- Display dimensions approx. w 400 x d 430 x h 486 mm

*Intelligent and modular
snap-in structure!*

*Up to (5) trays
can be stacked on
top of each other!*





FIMO® colour display

DISPLAY SHOWCASE LR80 SHOW

Dimensions approx.
w 80 x d 80 mm x h 84 mm
min. order unit: 1

FIMO® colour display

DISPLAY TUBE LR80 TUB

Dimensions approx.
w 392 x d 190 x h 80 mm
min. order unit: 1

FIMO® colour display

DISPLAY TRAY LR80 TRAY

Dimensions approx.
w 400 x d 265 x h 95 mm
min. order unit: 1

FIMO® colour display

DISPLAY FOOT LR80 FOOT

min. order unit: 1

The colour label comes complete with corresponding article numbers, colour names and EAN codes. The label can be positioned on the display and feed pushers respectively.



| | | | | | | | | | | | |
|---------|---------|----------|---------|---------|---------|---------|----------|---------|----------|----------|----------|
| 8020-0 | 8020-1 | 8020-2 | 8020-3 | 8020-4 | 8020-5 | 8020-6 | 8020-7 | 8020-8 | 8020-9 | 8020-10 | 8020-11 |
| weiß | gelb | orange | rot | rosa | lila | blau | hellblau | grün | hellgrün | gelbgrün | braun |
| 8020-12 | 8020-13 | 8020-14 | 8020-15 | 8020-16 | 8020-17 | 8020-18 | 8020-19 | 8020-20 | 8020-21 | 8020-22 | 8020-23 |
| schwarz | grün | hellgrün | gelb | orange | rot | rosa | lila | blau | hellblau | grün | hellgrün |



FIMO® COLOUR DISPLAY

COLOUR LABEL OVERVIEW:

Comes complete with corresponding article numbers, colour numbers and EAN codes.



| | | | | | |
|---------|---------|---------|---------|----------|----------|
| 8020-0 | 8020-1 | 8020-2 | 8020-3 | 8020-4 | 8020-5 |
| 8020-6 | 8020-7 | 8020-8 | 8020-9 | 8020-10 | 8020-11 |
| 8020-12 | 8020-13 | 8020-14 | 8020-15 | 8020-16 | 8020-17 |
| 8020-18 | 8020-19 | 8020-20 | 8020-21 | 8020-22 | 8020-23 |
| 8020-24 | 8020-25 | 8020-26 | 8020-27 | 8020-28 | 8020-29 |
| 8020-30 | 8020-31 | 8020-32 | 8020-33 | 8020-34 | 8020-35 |
| 8020-36 | 8020-37 | 8020-38 | 8020-39 | 8020-40 | 8020-41 |
| 8020-42 | 8020-43 | 8020-44 | 8020-45 | 8020-46 | 8020-47 |
| 8020-48 | 8020-49 | 8020-50 | 8020-51 | 8020-52 | 8020-53 |
| 8020-54 | 8020-55 | 8020-56 | 8020-57 | 8020-58 | 8020-59 |
| 8020-60 | 8020-61 | 8020-62 | 8020-63 | 8020-64 | 8020-65 |
| 8020-66 | 8020-67 | 8020-68 | 8020-69 | 8020-70 | 8020-71 |
| 8020-72 | 8020-73 | 8020-74 | 8020-75 | 8020-76 | 8020-77 |
| 8020-78 | 8020-79 | 8020-80 | 8020-81 | 8020-82 | 8020-83 |
| 8020-84 | 8020-85 | 8020-86 | 8020-87 | 8020-88 | 8020-89 |
| 8020-90 | 8020-91 | 8020-92 | 8020-93 | 8020-94 | 8020-95 |
| 8020-96 | 8020-97 | 8020-98 | 8020-99 | 8020-100 | 8020-101 |



INLAY:



FIMO®

INLAY SET 0M080G0

Set of four FIMO inlays for the new FIMO colour displays Tub (LR80 TUB02).
 Motifs: FIMO soft, effect, kids, professional,
 Dimensions each: 375 mm x 149 mm
 Paper: 80 g/m²



Display FIMO® kids

COLOUR LABEL 0I080W2



Display FIMO® soft

COLOUR LABEL 0I080T2



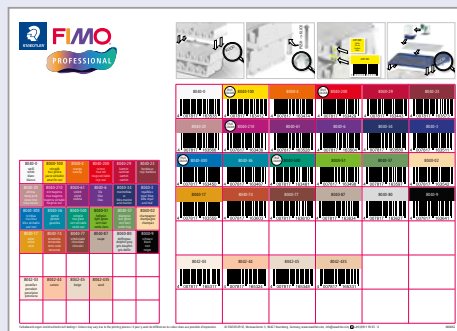
FIMO® effect

COLOUR LABEL 0I080U2



Display FIMO® professional

COLOUR LABEL 0I080S2



FIMO® professional**COLOUR DISPLAY****8040 VS**

Colour display with 24 colours
 (white, true yellow, orange, true red, carmine, bordeaux,
 taupe, pale pink, true magenta, violet, lilac, royal blue,
 navy blue, true blue, petrol, light green, true green, leaf green,
 champagne, ochre, terracotta, chocolate, dolphin grey, black)

Level / Row: 1–4**Push system**

6 colours each 12 packaging units

8040-FN**FIMO® professional**

Standard block 57 g (2 oz)

**FIMO® soft****COLOUR DISPLAY****8020 VS**

Colour display with 24 colours
 (white, lemon, sunflower, tangerine, indian red, cherry red,
 raspberry, purple, lavender, plum, windsor blue, brilliant blue,
 pacific blue, peppermint, emerald, tropical green, apple green,
 pale pink, sahara, cognac, caramel, chocolate, dolphin grey, black)

Level / Row: 1–4**Push system**

6 colours each 12 packaging units

8020-FN**FIMO® soft**

Standard block 57 g (2 oz)



FIMO® effect

COLOUR DISPLAY 8010 VS

Colour display with 24 colours

(galaxy red, galaxy blue, galaxy turquoise, galaxy green, galaxy purple, translucent, nightglow, neon yellow, neon pink, neon orange, neon green, metallic mother of pearl, metallic gold, metallic green, metallic bordeaux, metallic silver, metallic grey, glitter gold, glitter roségold, glitter silver, stone white granite, stone granite, stone black granite)

Level / Row: 1–4

Push system

6 colours each 12 packaging units

8010-FN

FIMO® effect

Standard block 57 g (2 oz)



FIMO® kids

COLOUR DISPLAY 8030 VS

Colour display with 24 colours

(white, yellow, orange, red, rosa, pink, lilac, blue, turquoise, green, light green, pale pink, light brown, brown, light grey, black, glitter white, glitter gold, glitter red, glitter pink, glitter blue, glitter grey, pearl light yellow, pearl rosa)

Level / Row: 1–4

Push system

6 colours each 12 packaging units

8030-FN

FIMO® professional

Standard block 57 g (2 oz)



THE STAEDTLER BRAND SHOP

Optimal product presentation for any sales area

Brand Shop

FIMO® kids

1 Level / Row: 1

Metal bar
5 packaging unit
8032 01
FIMO® kids
Set mod. clay colour pack Basic
8032 01
FIMO® kids
Set mod. clay colour pack Basic
8032 02
FIMO® kids
Set mod. clay colour pack Fancy

2 Level / Row: 2

Metal bar
each 1 packaging unit
8034 01 LY
FIMO® kids
Set mod. clay form & play farm
8034 02 LY
FIMO® kids
Set mod. clay form & play pets
8034 06 LY
FIMO® kids
Set mod. clay form & play princess

3 Level / Row: 3

Metal bar
each 1 packaging unit
8034 07 LY
FIMO® kids
Set mod. clay form & play dino
8034 08 LY
FIMO® kids
Set mod. clay form & play pony
8034 19 LY
FIMO® kids
Set mod. clay form & play unicorn

4 Level / Row: 4

Metal bar
each 2 packaging unit
8035 18
FIMO® kids
Kit penguin
8035 19
FIMO® kids
Kit koala
8035 20
FIMO® kids
Kit rabbit

5 Level / Row: 5

Metal bar
each 2 packaging unit
8035 21
FIMO® kids
Kit funny whale
8035 22
FIMO® kids
Kit funny glasses hero
8035 23
FIMO® kids
Kit funny rubber eater

6 Level / Row: 6

Metal bar
each 2 packaging unit
8035 24
FIMO® kids
Kit funny picture monster
8035 25
FIMO® kids
Kit funny scrunchie unicorn
8700 34
Accessory FIMO® kids
Cutting tools

7 Level / Row: 7

Push system
8 colours each 2 packaging units
8030-FN
FIMO® kids
Standard block 42 g (1.5 oz)

8 Level / Row: 8

Push system
8 colours each 2 packaging units
8030-FN
FIMO® kids
Standard block 42 g (1.5 oz)

9 Level / Row: 9

Push system
8 colours each 2 packaging units
8030-FN
FIMO® kids
Standard block 42 g (1.5 oz)



Brand shop elements

- 1x **9000CORE**
Core unit
- 2x **9000SHINE1**
Header
- 1x **9000GFIMO**
Brand Shop FIMO® header
- 3x **9000BAR**
Bar set
- 1x **9000BASE1**
Base 20 cm
- 1x **9000BASE2**
Base 30 cm
- 2x **9000SHINE2**
Base illumination
- 3x **0D082V0**
FIMO® scanner bar strips
- 3x **9000PUSH2**
FIMO® push system

Brand Shop

FIMO® air

1 Level / Row: 1**Metal bar**

4 pcs.

8700 05**FIMO®**

Acrylic roller

6 pcs.

8700 09**FIMO®**

Stamp set

30 pcs.

8781-26**FIMO®**

Leaf metal copper

3 Level / Row: 3**Push system**

each 9 packaging units

8100-0**FIMO® air**

Block white 500 g (17.64 oz)

8100-43**FIMO® air**

Block pale pink 500 g (17.64 oz)

8100-76**FIMO® air**

Block terracotta 500 g (17.64 oz)

8100-80**FIMO® air**

Block grey 500 g (17.64 oz)

5 Level / Row: 5**Push system**

each 9 packaging units

8150-G8**FIMO® air granite-effect**

Block 350 g (12.35 oz)

8150-W7 wood-effect**FIMO® air**

Block 350 g (12.35 oz)

2 Level / Row: 2**Metal bar**

each 2 pcs.

8711**FIMO®**

Modelling tools

each 8 pcs.

0V081N0**FIMO® air**

Tear-off pad

0V081M0**FIMO® air**

Tear-off pad

4 Level / Row: 4**Push system**

9 packaging units

8131-0**FIMO® air light**

Block white 250 g (8.82 oz)

6 packaging units

8130-0**FIMO® air light**

Block white 350 g (12.35 oz)

18 packaging units

8133-76**FIMO® air light**

Block terracotta 125 g (4.41 oz)

9 packaging units

8131-76**FIMO® air light**

Block terracotta 250 g (8.82 oz)

6 Level / Row: 6**Push system**

6 packaging units

81 SET 03**FIMO® air**

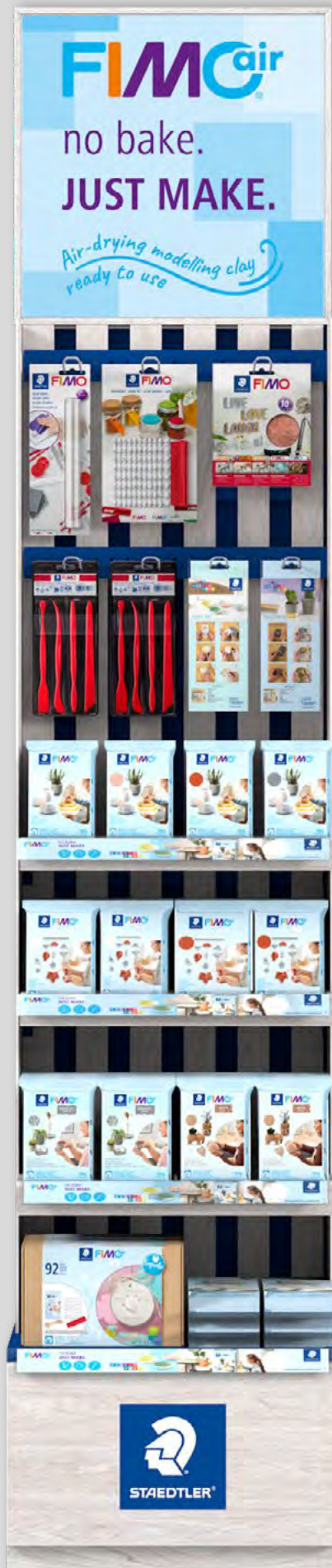
Keepsake set

each 3 packaging units

8102-0**FIMO® air**

Block white (70.55 oz)

FIMO® air



Brand shop elements

- 1x **9000CORE**
Core unit
- 2x **9000SHINE1**
Header
- 1x **9000GFIMO**
Brand Shop FIMO® header
- 2x **9000BAR**
Bar set
- 1x **9000BASE1**
Base 20 cm
- 1x **9000BASE2**
Base 30 cm
- 2x **9000SHINE2**
Base illumination
- 4x **0D082V0**
FIMO® scanner bar strips
- 4x **9000PUSH2**
FIMO® push system

Brand Shop**FIMO® oven-hardening, kids, hobby, professional****1 Level / Row: 1****Metal bar**

5 packaging units

8023 C24-1**FIMO® soft**

Colour pack 'Basic Colours'

each 6 packaging units

8023 C12-1**FIMO® soft**

Colour pack 'Basic colours'

8023 C12-1**FIMO® soft**

Colour pack 'Basic colours'

5 packaging units

8013 C24-1**FIMO® effect**

Colour pack

each 6 packaging units

8013 C12-1**FIMO® effect**

Colour pack

8013 C12-4**FIMO® effect**

Colour pack 'Sparkle'

2 Level / Row: 2**Metallstange**

each 6 packaging units

8023 C12-2**FIMO® soft**

Colour pack 'Brilliant colours'

8023 C12-3**FIMO® soft**

Colour pack 'Pastel colours'

8023 C12-4**FIMO® soft**

Colour pack 'Natural colours'

8023 C12-5**FIMO® soft**

Colour pack 'Fashion colours'

8013 C10-1**FIMO® effect**

Colour pack 'Mixing pearls'

8043 C12-1**FIMO® professional**

Colour pack 'Basic colours'

8043 C6-1**FIMO® professional**

Colour pack 'True colours'

each 4 packaging units

8043-S1**FIMO® professional**

Colour pack 'True colours'

8043-S2**FIMO® professional**

Colour pack 'Natural colours'

3 Level / Row: 3**Metal bar**

8 packaging units

8700 04**FIMO®**

Blade set mixed 3 pcs.

6 packaging units

8700 08**FIMO®**

Grind'n polish set

each 3 packaging units

8050-0**FIMO®**

Liquid gel 50 ml (1.69 fl oz)

8712**FIMO®**

Bead roller

6 packaging units

8712 20**FIMO®**

Bead piercing needles

5 packaging units

8703 01 BK**FIMO®**

Gloss varnish 10 ml (0.33 fl oz)

each 3 packaging units

8782 BK**FIMO®**

Size for leaf metal

8700 22**FIMO®**

Oven thermometer

7 packaging units

8724 03**FIMO®**

Shape cutters

8 packaging units

OV082C0**FIMO®**

Tear-off pad

4 Level / Row: 4**Push system**

16 colours each 12 packaging units

8020-FN**FIMO® soft**

Standard block 57 g (2 oz)

5 Level / Row: 5**Push system**

16 colours each 12 packaging units

8010-FN**FIMO® effect**

Standard block 57 g (2 oz)

6 Level / Row: 6**Push system**

16 colours each 12 packaging units

8040-FN**FIMO® professional**

Standard block 57 g (2 oz)

7 Level / Row: 7**Push system**

16 colours each 15 packaging units

8030-FN**FIMO® kids**

Standard block 42 g (1.5 oz)

8 Level / Row: 8**Push system**

each 4 packaging units

8021-FN**FIMO® soft**

Large block 454 g (16 oz)

6 packaging units

8023 15**FIMO® soft**

Colour pack „Basic XXL“

each 4 packaging units

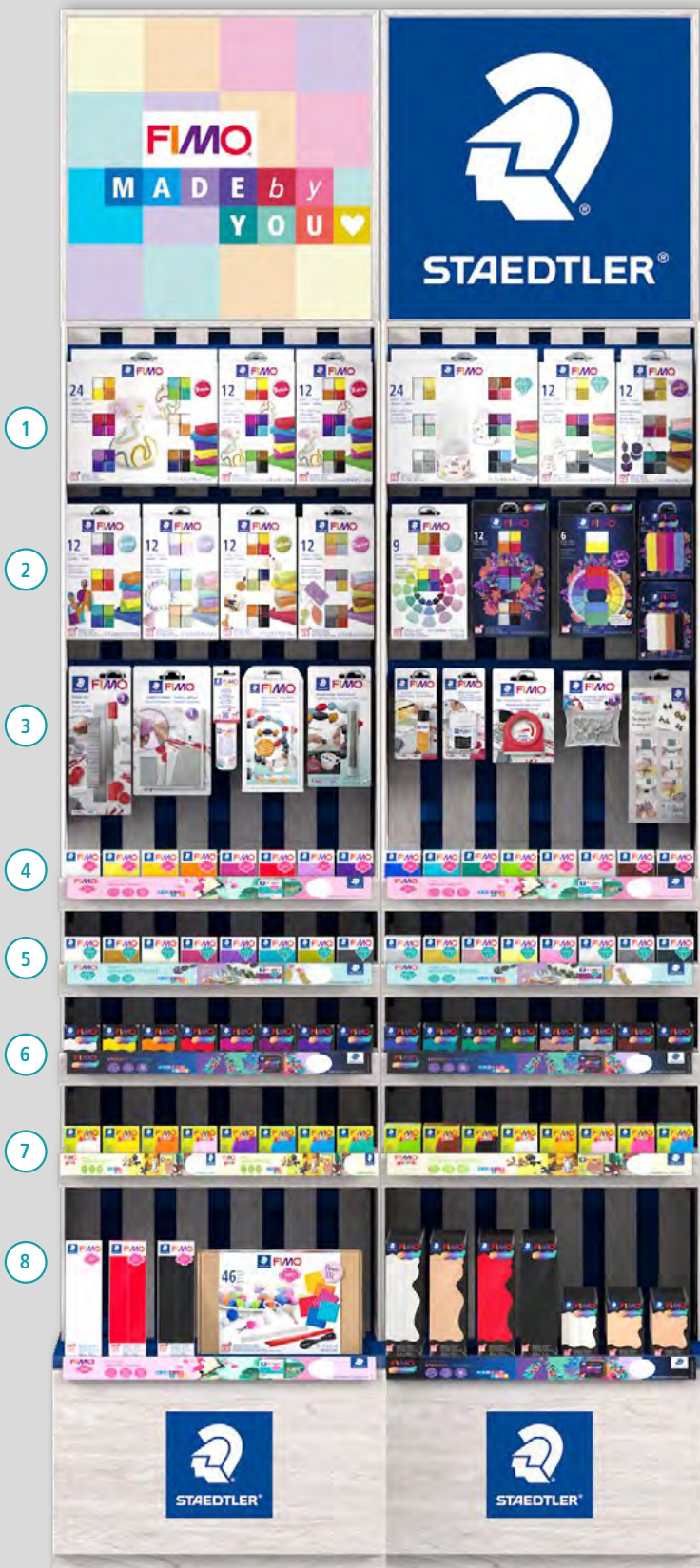
8041-FN**FIMO® professional**

Large block 454 g (16 oz)

each 8 packaging units

8042-FN**FIMO® professional**

Medium block 226g (8 oz)



Brand shop elements

- 2x **9000CORE**
Core unit
- 2x **9000SHINE1**
Header
- 1x **9000GFIMO**
Brand Shop FIMO® header
- 1x **9000GLOGO**
Brand Shop logo header
- 4x **9000BAR**
Bar set
- 5x **9000BASE1**
Base 20 cm
- 2x **9000BASE2**
Base 30 cm
- 2x **9000SHINE2**
Base illumination
- 4x **0D082V0**
FIMO® scanner bar strips
- 8x **9000PUSH2**
FIMO® Push system
- 2x **9000PUSH1**
Box push system

You can find more information about our Brand Shop modular system in the Brand Shop information brochure!

Brand Shop

FIMO® hobby mix

1 Level / Row: 1

Metal bar
each 6 pcs.
8023 C12-1
FIMO®
Colour pack 'Basic colours'
8023 C12-2
FIMO®
Colour pack 'Brilliant colours'
8023 C12-3
FIMO®
Colour pack 'Pastel colours'
8023 C12-5
FIMO®
Colour pack 'Fashion colours'
8013 C12-1
FIMO® effect
Colour pack 12 colours

2 Level / Row: 2

Metal bar
3 pcs.
0V082B0
FIMO® effect
Tear-off block
each 2 packaging unit
8711
FIMO®
Modelling tools
each 1 packaging unit
8700 05
FIMO®
Acrylic roller
each 2 packaging units
8700 04
FIMO®
Blade set mixed 3 pcs.
8700 09
FIMO®
Stamp kit

3 Level / Row: 3 left

Metal bar
each 1 packaging unit
8700 08
FIMO®
Grind'n polish set
8700 22
FIMO®
Oven thermometer
8724 03
FIMO®
Cutters
10 pcs.
8781-11/26/81
FIMO®
Leaf metal
each 1 packaging unit
8782 BK
FIMO®
Size for leaf metal
8704 01 BK
FIMO®
Gloss varnish 35 ml (1.18 fl oz)
8703 01 BK
FIMO®
Gloss varnish 10 ml (0.33 fl oz)
8050-0
FIMO®
Liquid gel 50 ml (1.69 fl oz)
8050-9
FIMO®
Liquid gel 50 ml (1.69 fl oz)
8050-11
FIMO®
Liquid gel 50 ml (1.69 fl oz)
8050-81
FIMO®
Liquid gel 50 ml (1.69 fl oz)

4 Level / Row: 4

Push system
8 colours each 2 packaging units
8020-FN
FIMO® soft
Standard block 57 g (2 oz)

5 Level / Row: 5

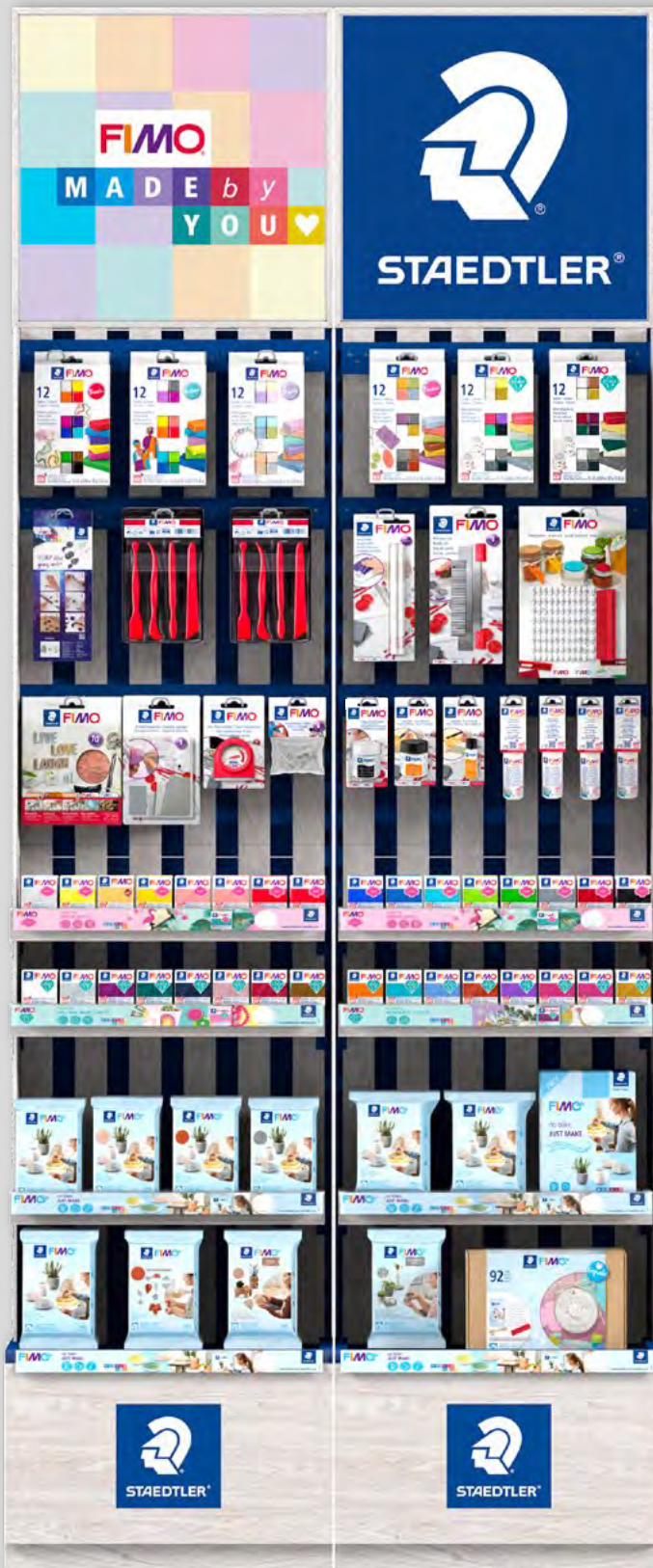
Push system
8 colours each 2 packaging units
8010-FN
FIMO® effect
Standard block 57 g (2 oz)

6 Level / Row: 6

Push system
each 6 pcs.
8100-0
FIMO® air
Block white 500 g (17.64 oz)
8100-43
FIMO® air
Block pale pink 500 g (17.64 oz)
8100-76
FIMO® air
Block terracotta 500 g (17.64 oz)
8100-80
FIMO® air
Block grey 500 g (17.64 oz)
3 pcs.
8101-0
FIMO® air
Block white 1000 g (35.27 oz)
30 pcs.
0V081L6000
FIMO® air
Lookbook

7 Level / Row: 7

Push system
each 6 pcs.
8131-0
FIMO® air light
Block white 250 g (8.82 oz)
8131-76
FIMO® air light
Block terracotta 250 g (8.82 oz)
8150-W7
FIMO® air wood-effect
Block 350 g (12.35 oz)
8150-G8
FIMO® air granite-effect
Block 350 g (12.35 oz)
3 pcs.
81 SET 03
FIMO®
Keepsake set



Brand Shop Elements

- 2x **9000CORE**
Core unit
- 2x **9000SHINE1**
Header
- 1x **9000GFIMO**
Brand Shop FIMO® header
- 1x **9000GLOGO**
Brand Shop logo header
- 3x **9000BAR**
Bar set
- 4x **9000BASE1**
Base 20 cm
- 2x **9000BASE2**
Base 30 cm
- 2x **9000SHINE2**
Base illumination
- 2x **0D082V0**
FIMO® scanner bar strips
- 4x **9000PUSH2**
FIMO® push system
- 4x **9000PUSH1**
Box push system

| | | |
|--------------------|---|-------|
| 0D082PO | FIMO® wobbler set for the POS | 12 |
| 0D082V0 | FIMO® shelf covers for the POS | 12 |
| 0G080.. | Tutorial tear-off pads for the POS | 11 |
| 0I080.. | Colour labels..... | 78 |
| 0M080G0 | FIMO® inlays set | 77 |
| 0M080J3600 | FIMO® effect botanical colours giveaway..... | 37 |
| 0V08.. | Tutorial tear-off pads for the POS | 11 |
| 0V080Q6000 | FIMO® brochure soft and effect..... | 10 |
| 0V081L6000 | FIMO® air lookbook | 10 |
| 0V082F6000 | FIMO® professional flyer | 10 |
| 0V082E3008 | FIMO® effect botanical colours mini flyer..... | 37 |
| 8025HTCCA2 | FIMO® effect how-to-create set display | 40 |
| 813 SLE | Noris® junior plasticine clay set..... | 73 |
| 813F SLE | Noris® junior plasticine clay set..... | 73 |
| 8003 01 | FIMO® professional colour pack 'True Colours' | 57 |
| 8004 VS | FIMO® professional colour display..... | 56 |
| 8010-.. | FIMO® effect standard block | 35 |
| 8010CA36-1 | FIMO® effect botanical colours display | 37 |
| 8010 VS | FIMO® effect colour display..... | 36 |
| 8013 C12-.. | FIMO® soft colour pack | 36,38 |
| 8013 C24-1 | FIMO® effect colour pack | 36 |
| 8020-.. | FIMO® soft standard block | 27 |
| 8020-T.. | FIMO® soft trend colours standard block | 28 |
| 8020 T24CA | FIMO® soft trend colours display..... | 28 |
| 8020 VS | FIMO® soft Colour display | 30 |
| 8021-.. | FIMO® soft large block..... | 30 |
| 8023.. | FIMO® soft colour pack | 31–33 |
| 8025 | HOW-TO-CREATE sets..... | 39–41 |
| 8025.. | FIMO® soft & effect HOW-TO-CREATE sets | 40–42 |
| 8026 | FIMO® Mix Quick..... | 45 |
| 8030-.. | FIMO® kids standard block..... | 16 |
| 8030 VS | FIMO® kids colour display | 17 |
| 8032.. | FIMO® kids colour pack..... | 18 |

| | | |
|-------------------|---|-------|
| 8034.. | FIMO® kids form&play sets | 21–23 |
| 8040-.. | FIMO® professional standard block | 54 |
| 8040 VS | FIMO® professional display | 79 |
| 8041.. | FIMO® professional large block | 55 |
| 8042.. | FIMO® professional medium block | 55 |
| 8043 C12-1 | FIMO® professional colour pack 'Basic colours' | 56 |
| 8043 C6-1 | FIMO® professional colour pack 'True colours' | 56 |
| 8043 S1 | FIMO® professional colour pack 'True colours' | 57 |
| 8043 S2 | FIMO® professional colour pack 'Natural colours' | 57 |
| 8050-.. | FIMO® liquid gel, 200 ml | 44 |
| 8051-.. | FIMO® liquid shelf ready display | 45 |
| 8100-.. | FIMO® air block 500 g | 66 |
| 8101-.. | FIMO® air block 1000 g | 66 |
| 8102-0 | FIMO® air block 2000 g | 66 |
| 8103-.. | FIMO® air block 250 g | 66 |
| 8130-0 | FIMO® air light block 350 g | 67 |
| 8131-.. | FIMO® air light block 250 g | 67 |
| 8133-.. | FIMO® air light block 125 g | 67 |
| 8150-W7 | FIMO® air wood-effect block 350 g | 68 |
| 81 SET.. | FIMO® air sets | 70 |
| 8150-G8 | FIMO® air granite-effect block 350 g | 69 |
| 842.. | Noris® jumbo plasticine clay sets | 74 |
| 8421-.. | Noris® jumbo plasticine clay standard block, 1000 g | 74 |
| 8625.. | FIMO® soft & effect jewellery accessories set | 39,42 |
| 8700.. | FIMO® soft & effect creative accessories | 47–49 |
| 870.. | FIMO® soft & effect varnishes | 51 |
| 8711 | FIMO® modelling tools | 48 |
| 8712.. | FIMO® bead roller & bead piercing needles | 46 |
| 8724 03 | FIMO® shaped cutters | 48 |
| 8781-.. | FIMO® soft & effect leaf metal | 50 |
| 8782 BK | FIMO® soft & effect size for leaf metal | 51 |
| LR80.. | FIMO® colour display | 76 |



STAEDTLER SE
Moosaeckerstr. 3
90427 Nuernberg
Germany

info@staedtler.com
www.staedtler.com

Edition: 05/2024
Subject to change.

